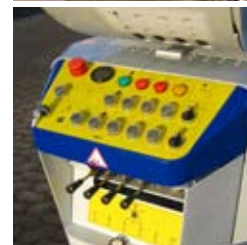




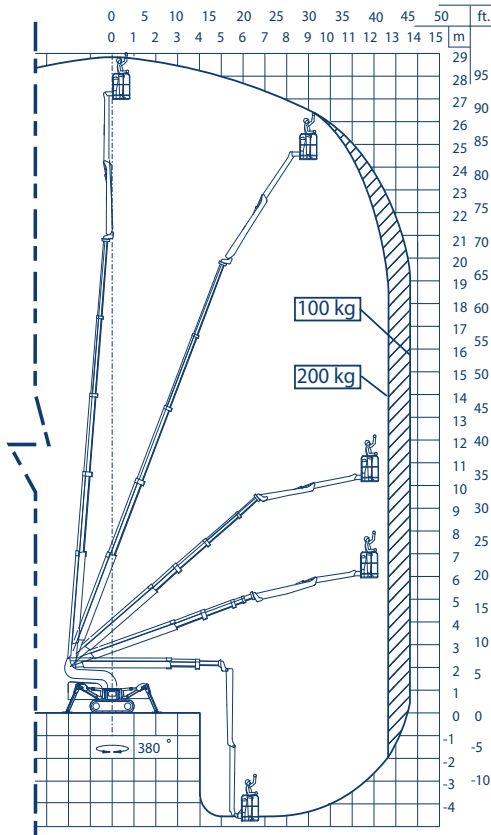
## FS290C / FS320C FALCON SPIDER

Model:	FS290C	FS320C
Working height:	29 m	32 m
Maximum reach:	14-15 m	14-15 m
Linkarm (2 x 3 m):	6 m	6 m
Double linkarm:	200°	200°
Basket load:	200 kg	200 kg
Aluminium basket:	(0,8 x 1,4 m)	(0,8 x 1,4 m)
Basket rotation (option):	+/- 90°	+/- 90°
Turret rotation:	375°	375°
Dimensions (transport position)		
Total height:	2,30 m	2,30 m
Total length:	6,35 m	7,20 m
Total width:	1,50 m	1,50 m
Gradability (standard):	30° / 57%	30° / 57%
Weight approx.:	4,950 kg*	5,450 kg*

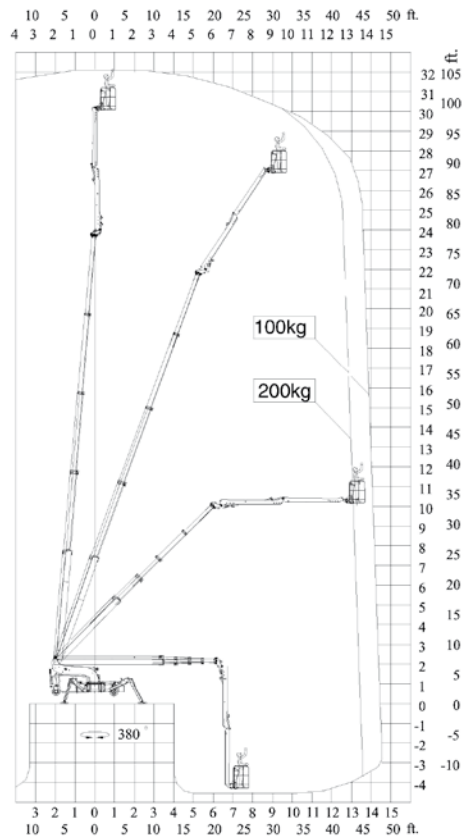
\*Depending on optional equipment



FS290C



FS320C



Standard equipment:

- Automatic stability & outreach control
- Computer controlled (can-bus)
- Proportional control of all functions
- Self-propelled
- Battery powered with charger
- Double link-arm system
- 375° turret rotation, with integrated stop
- Individual setting of each outrigger
- Electronic checking of the power system (PLC)
- Manual pump system for emergency lowering
- Ability to self-load onto trucks or trailers
- Chassis control from basket (chassis & lift)
- Diesel engine, Kubota (4-cyl)
- Space for tools etc. in basket
- Storage room in chassis with lock

Options:

- +/- 90° basket rotation
- 220V AC power supply in the basket
- Air / water supply in the basket
- Sensor system on basket
- Non marking belts
- Basket in various sizes
- Height control switch
- Special colour
- Autosetting / levelling from basket
- Portable control panel
- Special outrigger footplates
- Outriggers with flexible joints
- Continuous turret rotation
- Intercommunication system
- Anemometer wind warning system
- Slope alarm

**Odense**

Tolderlundsvej 106  
 DK-5000 Odense C  
 Phone +45 66 13 11 00  
 Fax +45 66 13 03 19

**Holbæk**

Højvang 5  
 DK-4300 Holbæk  
 Phone +45 59 45 55 00  
 Fax +45 59 44 21 55

[www.wl-industries.com](http://www.wl-industries.com)

We reserve the right to alterations

FALCK SCHMIDT SERIES • FALCON SERIES • DENKA SERIES

