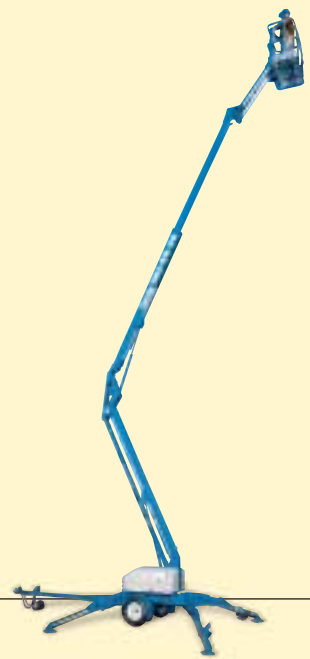


Trailer Mounted Z-Boom

TMZ-50/30

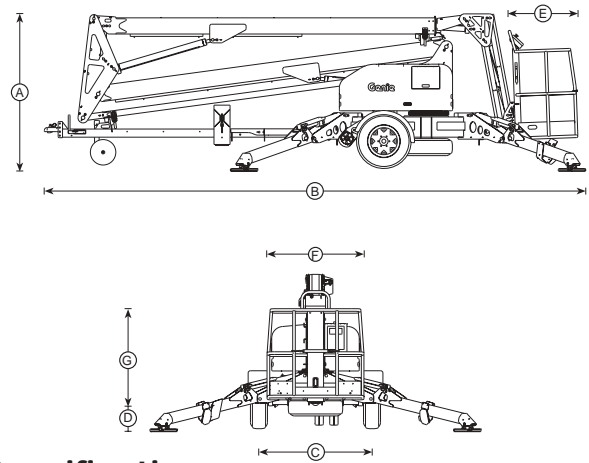


○ The ultimate
in reach
and range.

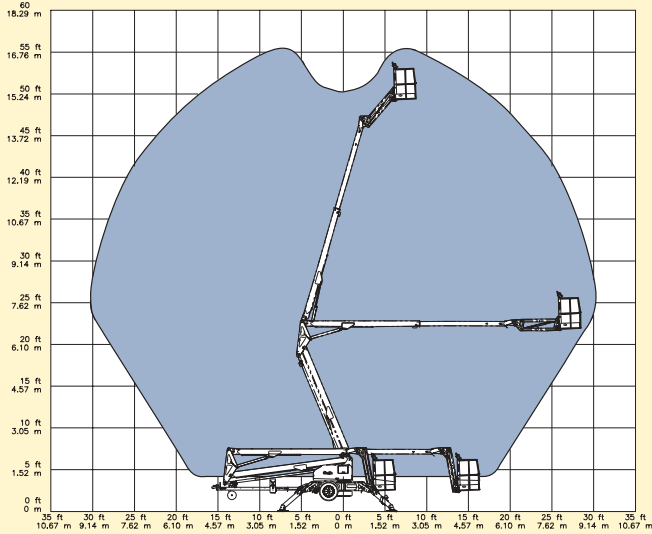


Standard Features

- 56 ft (17.2 m) working height*
- 30 ft (9.1 m) horizontal reach
- Articulating jib has 135° working range
- Compact 65 in (1.65 m) width
- 500 lb (227 kg) lift capacity
- Large, 10 x 10 in (25 x 25 cm) outrigger footpads
- Junction box and shelf to accommodate generators up to 24 x 20 x 16 ½ in (61 x 51 x 42 cm)
- AC wiring to platform
- Surge brakes
- Parking brake
- Horn
- Hour meter



Range of Motion



Options and Accessories

- Material lift attachment device
- Drive and set option
- Air line to platform
- Spare tire
- Fluorescent tube caddy
- Flashing beacon
- Platform rotation (ANSI and CE models only)
- Electric, hydraulic or mechanical surge brakes
- 2 in (50 mm) ball coupler
- 2 5/16 in (6 cm) ball coupler
- 2 1/2 in (6.35 cm) I.D. Pintle ring coupler
- Clevis coupler

Standards Compliance

- ANSI A92.2
- CAN/CSA-C225-M88
- CE Compliance
- AS 1418.10

Specifications

Model	US	Metric
Working height*	56 ft	17.2 m
Platform height	50 ft	15.2 m
Ⓐ Height – stowed	78 in	2 m
Ⓑ Length – stowed	22 ft	6.7 m
Ⓒ Width	65 in	1.65 m
Ⓓ Ground clearance	10 in	25 cm
Ⓔ Platform length	30 in	76 cm
Ⓕ Platform width	48 in	1.22 m
Ⓖ Platform railing height	43 in	1.1 m
Toeboard height	7 in	18 cm
Toeboard height – entry	4 in	10 cm
Entry height	20 in	51 cm
Horizontal reach – from pivot	30 ft	9.1 m
Horizontal reach – from edge of outrigger footpads	23 ft	7 m
Up and over clearance	22 ft	6.7 m
Outrigger footprint – length	14 ft	4.3 m
Outrigger footprint – width	14 ft	4.3 m
Outrigger type	hydraulic	
Leveling capability	10°	10°
Lift capacity		
– ANSI, CE	500 lb	227 kg
– CSA, models with platform rotation option	440 lb	200 kg
Turntable rotation	359° non-continuous	
Towing speed rating	60 mph	97 km/h
Power sources	24V (4 6V 250 AH batteries)	
	Honda Gas 11 hp (8 kw)	
	Hatz Diesel 7 hp (5 kw)	
	Bi-fuel: 24V (4 6V 250 AH batteries) and Honda Gas 11 hp (8 kw)	
	Bi-fuel: 24V (4 6V 250 AH batteries) and Hatz Diesel 7 hp (5 kw)	
Gradeability	20%	20%
Tongue weight	400 lb	181 kg
Machine weight – ANSI, CE	4,600 lb	2,087 kg
– CSA	4,850 lb	2,200 kg

*The metric equivalent of working height adds 2 m to platform height. U.S. adds 6 ft to platform height.

Distributed By:

Genie Industries

GENIE UNITED STATES

18340 NE 76th Street
 P. O. Box 97030
 Redmond, Washington 98073-9730
 Telephone (425) 881-1800
 Toll Free in USA/Canada 800-536-1800
 Fax (425) 883-3475
<http://www.genieindustries.com>

GENIE UNITED KINGDOM

The Maltings, Wharf Road
 Grantham
 Lincolnshire NG31 6BH
 England
 Telephone: +44 (0)1476 584333
 Fax: +44 (0)1476 584334
<http://www.genieindustries.com>