



Trailer
Mounted
Z-Boom

TMZ-34/19

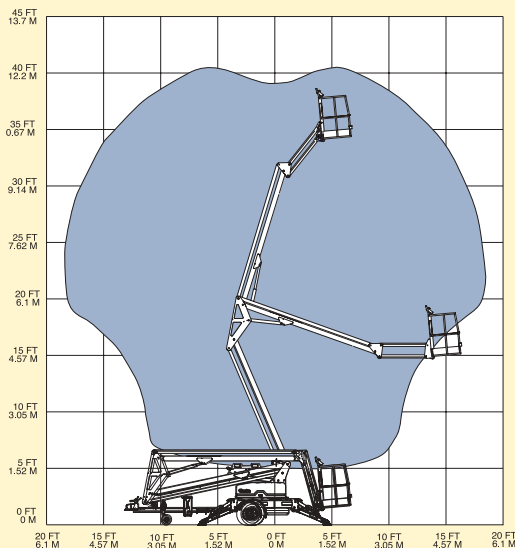
- The best quality, value and innovation in the trailer mounted boom market.



Standard Features

- 40 ft (12.36 m) working height
- 19 ft (5.8 m) horizontal reach
- Articulating jib has 135° working range
- 500 lb (227 kg) lift capacity
- Outrigger interlocks
- Large, 8 in (20 cm) outrigger footpads
- Non-marking footpad covers
- Junction box, shelf and tie-down attachment points to accommodate generators up to 24 x 20 x 16 ½ in (61 x 51 x 42 cm)
- AC wiring to platform
- Surge brakes
- Parking brake
- Horn
- Hour meter

Range of Motion

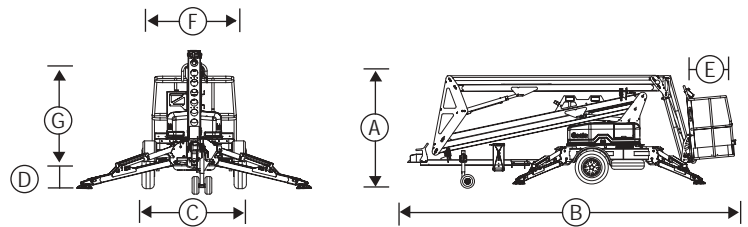


Options and Accessories

- Hydraulic outriggers with automatic leveling system
- Platform rotation
- Material lift attachment device
- Air line to platform
- Spare tire
- Fluorescent tube caddy
- Mechanical surge brakes
- Warning light
- Combination hitch
- A variety of hitches are available
- Tool tray

Standards Compliance

- ANSI A92.2
- CAN/CSA-C225-M88
- CE
- AS 1418.10



Specifications

Model	US	Metric
Working height*	40 ft	12.36 m
Platform height	34 ft	10.36 m
(A) Height - stowed	77 ½ in	1.97 m
(B) Length - stowed	19 ft 9 in	6 m
(C) Width	59.5 in	1.51 m
(D) Ground clearance	9 ½ in	24 cm
(E) Platform length	32 in	81 cm
(F) Platform width	48 in	1.22 m
(G) Platform railing height	44 in	1.12 m
Toeboard height	7 in	18 cm
Toeboard height - entry	4 in	10 cm
Entry height	18 in	46 cm
Horizontal reach - from pivot	19 ft	5.8 m
Horizontal reach - from edge of outrigger footpads	14 ft	4.27 m
Outrigger footprint - length	11 ft	3.35 m
Outrigger footprint - width	10 ft	3.04 m
Leveling capability - manual outriggers	12°	12°
- hydraulic outriggers	10°	10°
Lift capacity - ANSI, CE	500 lb	227 kg
- CSA, ANSI or CE models with platform rotation option	440 lb	200 kg
Turntable rotation	359° non-continuous	
Towing speed rating	60 mph	97 km/h
Power source	24V DC	
AC wiring to platform	standard	
Tongue weight - Domestic	165 lb	75 kg
- European	220 lb	100 kg
Tire size - Domestic	195/75 D14	
- European	195/65 R15	
Surge brakes	standard	
Parking brake	standard	
**Net machine weight		
(manual outriggers)	3,110 lb	1,411 kg
(hydraulic outriggers)	3,185 lb	1,445 kg

*The metric equivalent of working height adds 2 m to platform height. U.S. adds 6 ft to platform height.

**Weight will vary depending on options and/or country standards.

Distributed By:

Genie Industries

GENIE UNITED STATES

18340 NE 76th Street
P.O. Box 97030
Redmond, Washington 98073-9730
Telephone (425) 881-1800
Toll Free in USA/Canada 800-536-1800
Fax (425) 883-3475
<http://www.genieindustries.com>

GENIE UNITED KINGDOM

The Maltings, Wharf Road
Grantham
Lincolnshire NG31 6BH
England
Telephone: +44 (0)1476 584333
Fax: +44 (0)1476 584334
<http://www.genieindustries.com>