

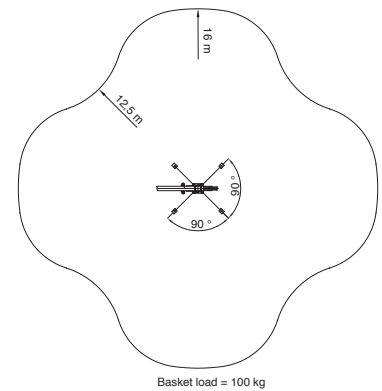
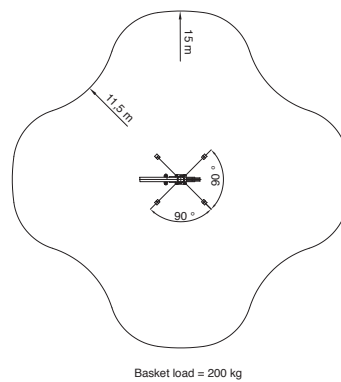
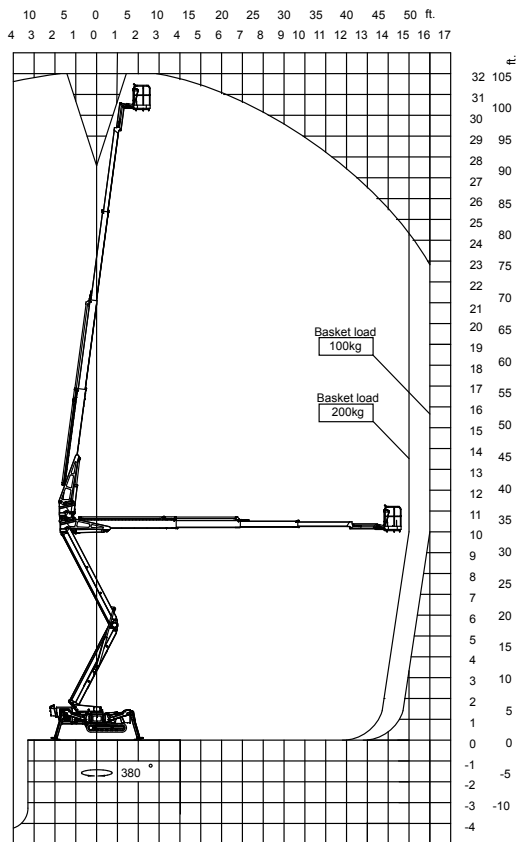


FS320Z FALCON

Model:	FS320Z
Working height:	32 m
Maximum reach:	15 m – 16 m
Jib arm:	110°
Basket load:	200 kg
Aluminium basket:	(0,8 x 1,4 m)
Basket rotation:	+/- 45°
Turret rotation:	375°
Dimensions (transport position)	
Total height:	2,27 m
Total length:	6,95 m
Total width (min):	1,1 – 1,5 m
Gradability (standard):	20°/37%
Weight approx.:	5.900 kg



FS320Z



Standard equipment:

- Automatic stability & outreach control
- Computer controlled (can-bus)
- Proportional control of all functions
- Self-propelled
- Battery powered with charger
- Jib-arm
- 375° turret rotation, with integrated stop
- +/- 45° basket rotation
- Electronic checking of the power system (PLC)
- Manual pump system for emergency lowering
- Ability to self-load onto trucks or trailers
- Crawler system
- Variable width, hydraulic
- Minimum width only 1,10 m
- Space for tools etc. in basket
- Storage room in chassis with lock
- Diesel engine, Kubota
- Portable control panel
- 220V AC power supply in the basket
- Non marking crawlers

We reserve the right to alterations

SKAKO LIFT
Tolderundsvej 106
DK-5000 Odense C
Telefon: +45 66 13 11 00
www.skako.com