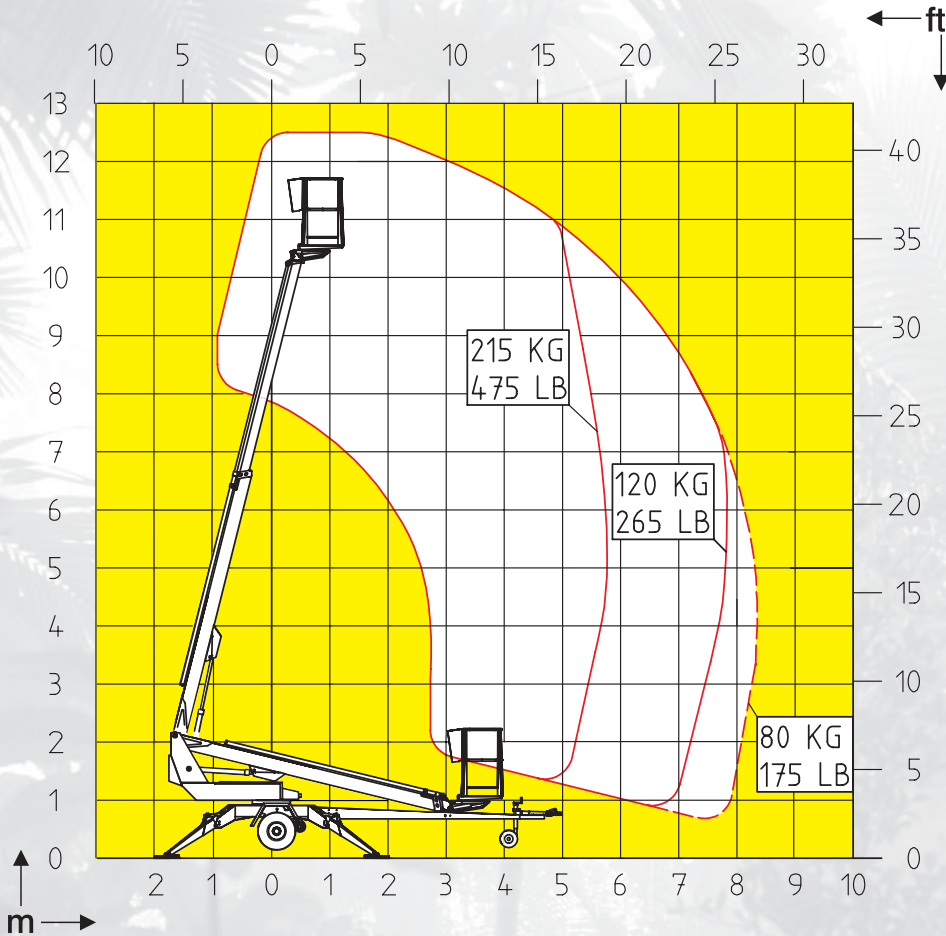


DINO[®] 125T

**A compact and sturdy member
of the DINO family**



Technical specification on DINO® I25T



Working height	12.5 m	41'
Platform height	10.5 m	34'5"
Maximum outreach	8.3 m	27'
Support width	3.6 m	11'10"
Lifting capacity	215 kg	475 lbs
Basket size	0.7 x 1.3 m	2'4" x 4'3"
Boom rotation	continuous	continuous
Basket rotation	90° (optional)	90° (optional)
Boom control	2-speed	2-speed
Transport length	6.80 m	22'4"
Transport width	1.65 m	5'5"
Transport height	1.98 m	6'6"
Weight (with driving system)	1450 kg	3200 lbs
Driving system	standard	standard
AC-socket in the basket	standard	standard
Power supply	110 VAC/230 VAC	110 VAC/230 VAC
Gradeability %	25 %	25 %

The specification is subject to change without notice.

Manufacturer

DINO Lift®

Dino Lift Oy, Raikkolantie 145, FI-32210 Loimaa, Finland
Tel. +358-2-762 5900, Fax +358-2-762 7160
E-mail: dino@dinolift.com, www.dinolift.com

Dealer



The rigid but lightweight design of the DINO I25T provides a maximum outreach of 8.3 m.



The compact design of the DINO I25T allows the machine to operate in confined areas.



The hydraulic drive system enables the DINO I25T to be moved easily around site.

DINO® and Dino Lift® are trademarks registered by the company Dino Lift Oy.