



Competitive Profile Worksheet

BIL-JAX Advantages

- 3 ft greater platform & working height.
- Over 2 ft greater centerline and usable outreach (from footpad edge).
- 3 ft greater up and over clearance.
- Greater turntable rotation.
- 2 ft shorter stowed length for greater maneuverability and access into space restricted areas. Quick disconnect platform can be removed to provide a stowed length advantage of over 4 ft.
- Larger platform.
- Platform jib for superior platform positioning capabilities.
- Optional horizontal jib rotator.
- Optimized outrigger geometry provides greater leveling capability.
- ReGEN hydraulic circuit provides faster outrigger deployment.
- 2 ft narrower outrigger footprint width provides the ability to set-up the machine in space restricted work areas.
- Larger footpad diameter provides lower ground pressure.
- Higher tow speed rating.
- Greater amp-hour rating on batteries.
- Greater charger amp output rating.
- Total machine weight is 70 lbs lighter.
- Multiple function speeds available at both platform and ground control box.
- More intuitive control system. (refer to control system comparison tab).
- DC/Gas hybrid model available, as well as drive & set and material lift options.
- Non-marking outrigger footpads and custom aluminum rims are standard equipment.
- Patent Pending Retractable Axle Option provides access through standard doorways and fence gates.

BIL-JAX 3522A vs Genie TZ-34/20

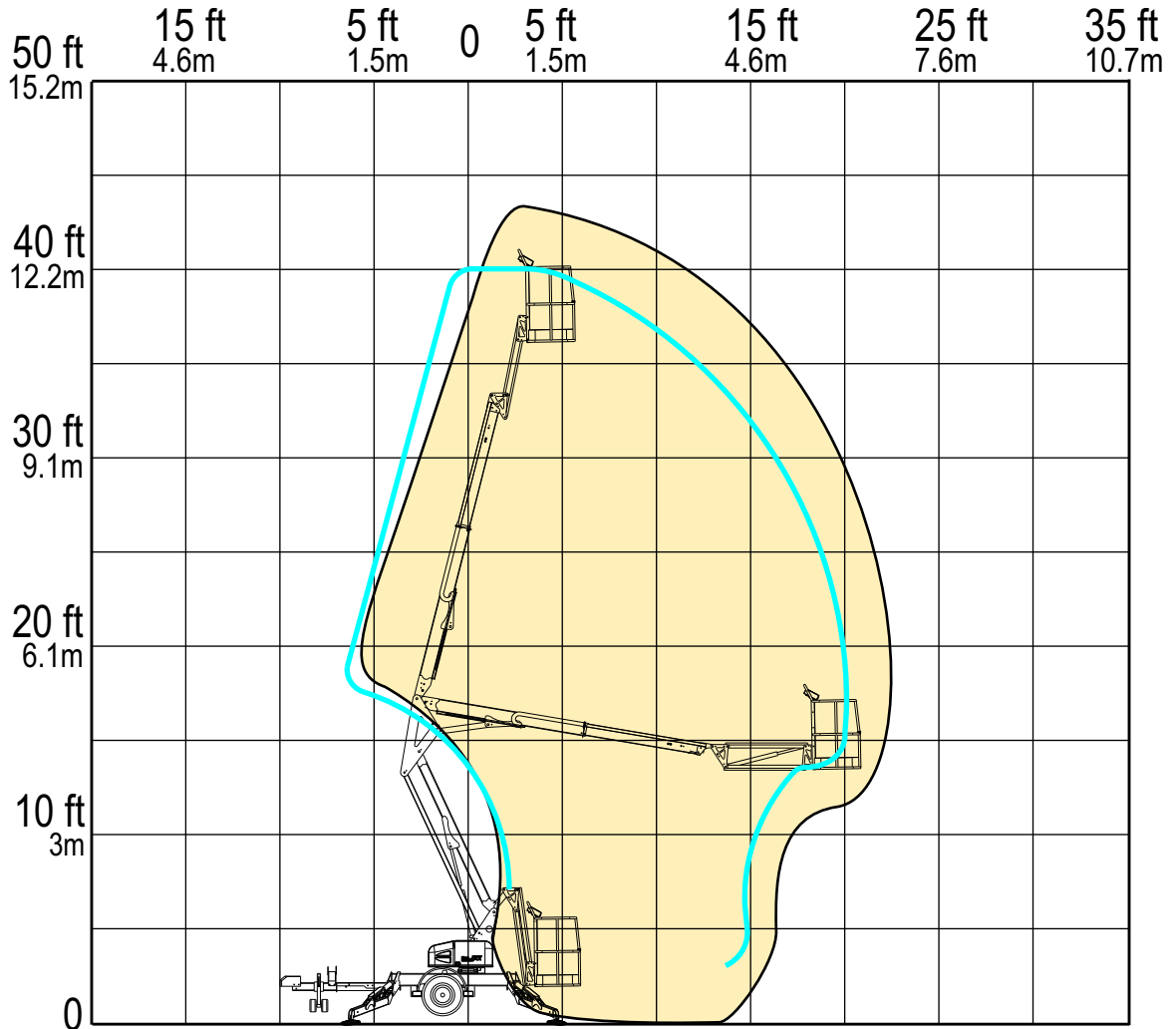
Competitive Product Specifications		
	BIL-JAX	Genie (Terex)
Specifications	3522A	TZ-34/20
✓ Working height	43 ft 2 in	40 ft
✓ Maximum platform height	37 ft 2 in	34 ft
✓ Horizontal outreach		
✓ Maximum (from centerline)	22 ft 6 in	20 ft
✓ Maximum (from footpad edge)	17 ft 5 in	15 ft 1 in
✓ Up and over height	19 ft	16 ft 1 in
✓ Turntable rotation	700° non-continuous	359° non-continuous
Load capacity	500 lbs	500 lbs
Height - stowed	76 3/4 in	76 1/2 in
✓ Length - stowed	16 ft 3 in	18 ft 1/2 in
Width - stowed	5 ft 5 1/2 in	4 ft 9 in
Platform		
Height	43 in	NP
✓ Length	30 in	27 in
✓ Width	48 in	44 in
Rotation / type (optional)	90° / manual	90° / manual
✓ Jib		
✓ Length	4 ft 3 in	N/A
✓ Vertical motion	150° (+70 / -80)	N/A
✓ Horizontal rotation (optional)	180° / hydraulic	N/A
Outrigger type	Hydraulic	Hydraulic
Leveling system	Auto Leveling	Auto Leveling
✓ Leveling capability	12 1/2°	11°
Outrigger footprint - length	11 ft 3/4 in	10 ft 8 1/2 in
✓ Outrigger footprint - width	9 ft 10 1/2 in	11 ft 9 1/2 in
✓ Footpad diameter	10 in	8 in
✓ Tow speed rating	65 mph	60 mph
Tongue weight	190 lbs	315 lbs
Surge brakes	Standard	Standard
Parking brake	Standard	Standard
Tire size	ST 205/75 R14C	ST 205/75 R14C
Standard control system	24V DC	24V DC
✓ Batteries	4 x 6V 245 amp-hr	4 x 6V 225 amp-hr
✓ Charger	25 amp	20 amp
✓ Total weight	3,080 lbs	3,150 lbs

The BIL-JAX specifications listed above are based on physical measurements of prototype machines and are subject to change prior to production start-up.

RANGE OF MOTION

**BIL-JAX 3522A
VS.
GENIE TZ34**

OUTREACH (FROM CENTERLINE)



	BIL-JAX 3522A	GENIE TZ34
Max. Working Height	43 ft 2 in	40 ft
Max. Outreach (from centerline)	22 ft 6 in	20 ft

REACH MORE

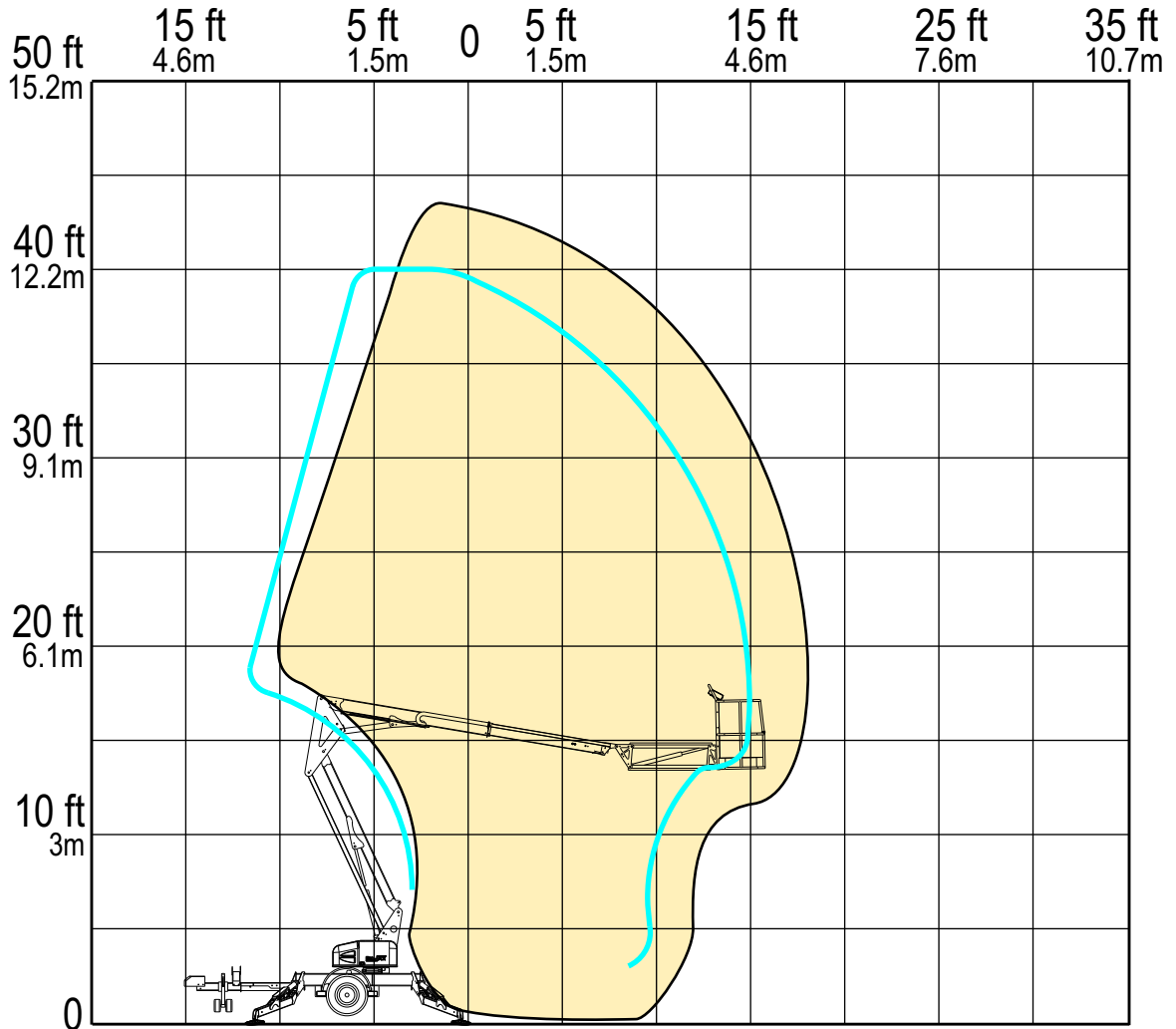
MORE REACH

RANGE OF MOTION

**BIL-JAX 3522A
VS.
GENIE TZ34**

USABLE OUTREACH

(FROM OUTRIGGER FOOTPAD)



	BIL-JAX 3522A	GENIE TZ34
Max. Working Height	43 ft 2 in	40 ft
Max. Outreach (from outrigger footpad)	17 ft 5 in	15 ft

REACH MORE

MORE REACH