



BIL-JAX 3522A vs NiftyLift T34T

Competitive Profile Worksheet

BIL-JAX Advantages

- Nearly 4 ft greater platform & working height. ✓
- At least 2 1/2 ft greater centerline and usable outreach (from footpad edge). ✓
- Greater turntable rotation. ✓
- Larger platform. ✓
- Quick disconnect platform can be removed to reduce overall machine length to < 14 ft. ✓
- Platform jib for superior platform positioning capabilities. ✓
- Optional horizontal jib rotator. ✓
- Automatic leveling system. ✓
- Optimized outrigger geometry provides greater leveling capability. ✓
- ReGEN hydraulic circuit provides faster outrigger deployment. ✓
- 2 ft narrower outrigger footprint provides the ability to set-up the machine in space restricted work areas. ✓
- Larger footpad diameter provides lower ground pressure. ✓
- Significantly higher tow speed rating. ✓
- More intuitive control system. ✓
- Significantly less hoses and fittings reduces potential leak points. ✓
- Lower list and net pricing equals higher ROI for rental companies. ✓
- DC/Gas hybrid model available, as well as drive & set and material lift options. ✓
- Non-marking outrigger footpads and custom aluminum rims are standard equipment. ✓
- Patent Pending Retractable Axle Option provides access through standard doorways and fence gates. ✓
- Made in USA. ✓

NiftyLift Advantages

- More compact stowed package* (stowed height length & width).
- Stand-alone gas model is available.

Competitive Product Specifications		
	BIL-JAX	NiftyLift
Specifications	3522A	TM34T
Working height	43 ft 2 in	39 ft 6 in
Maximum platform height	37 ft 2 in	33 ft 6 in
Horizontal outreach		
Maximum (from centerline)	22 ft 6 in	20 ft 1 in
Maximum (from footpad edge)	17 ft 5 in	NP
Up and over height	19 ft	NP
Turntable rotation	700° non-continuous	360° non-continuous
Load capacity	500 lbs	500 lbs
Height - stowed	76 3/4 in	75 in
Length - stowed	16 ft 3 in	14 ft 9 in
Width - stowed	5 ft 5 1/2 in	4 ft 11 in
Platform		
Height	43 in	NP
Length	30 in	25 in
Width	48 in	44 in
Rotation / type (optional)	90° / manual	---
Jib		
Length	4 ft 3 in	N/A
Vertical motion	150° (+70 / -80)	N/A
Horizontal rotation (optional)	180° / hydraulic	N/A
Outrigger type	Hydraulic	Hydraulic
Leveling system	Auto Leveling	Manual Leveling
Leveling capability	12 1/2°	NP
Outrigger footprint - length	11 ft 3/4 in	NP
Outrigger footprint - width	9 ft 10 1/2 in	11 ft 8 in
Footpad diameter	10 in	NP
Tow speed rating	65 mph	45 mph
Tongue weight	190 lbs	NP
Surge brakes	Standard	---
Parking brake	Standard	---
Tire size	ST 205/75 R14C	NP
Standard control system	24V DC	---
Batteries	4 x 6V 245 amp-hr	---
Charger	25 amp	---
Total weight	3,080 lbs	3,080 lbs

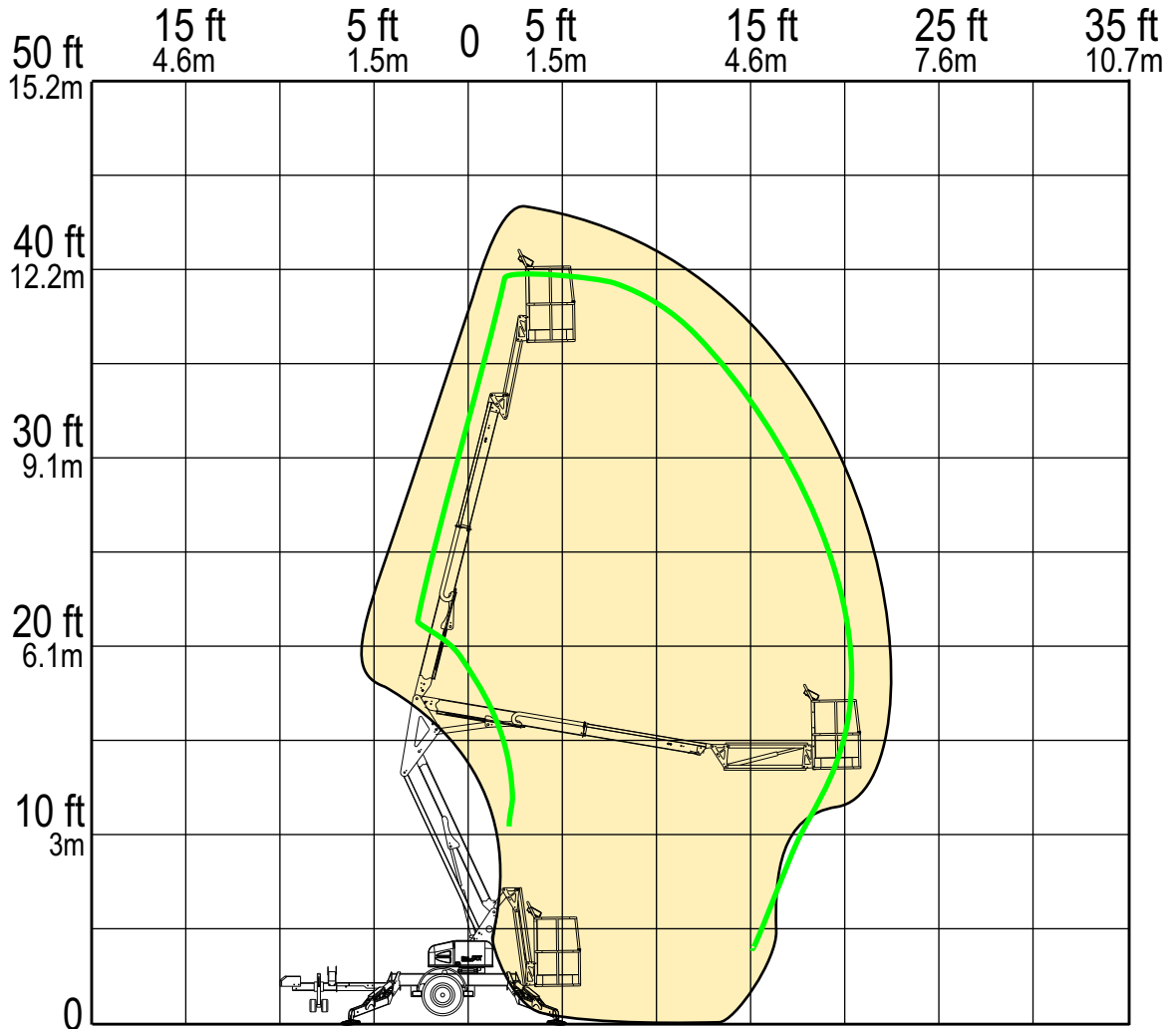
The BIL-JAX specifications listed above are based on physical measurements of prototype machines and are subject to change prior to production start-up.

* Note: The stowed length of the BIL-JAX model can be made shorter than NiftyLift when platform is removed (i.e. for freight elevator access, etc.).

RANGE OF MOTION

**BIL-JAX 3522A
VS.
NIFTY LIFT TM34T**

OUTREACH (FROM CENTERLINE)



	BIL-JAX 3522A	NIFTY TM34T
Max. Working Height	43 ft 2 in	39 ft 6 in
Max. Outreach (from centerline)	22 ft 6 in	20 ft 1 in

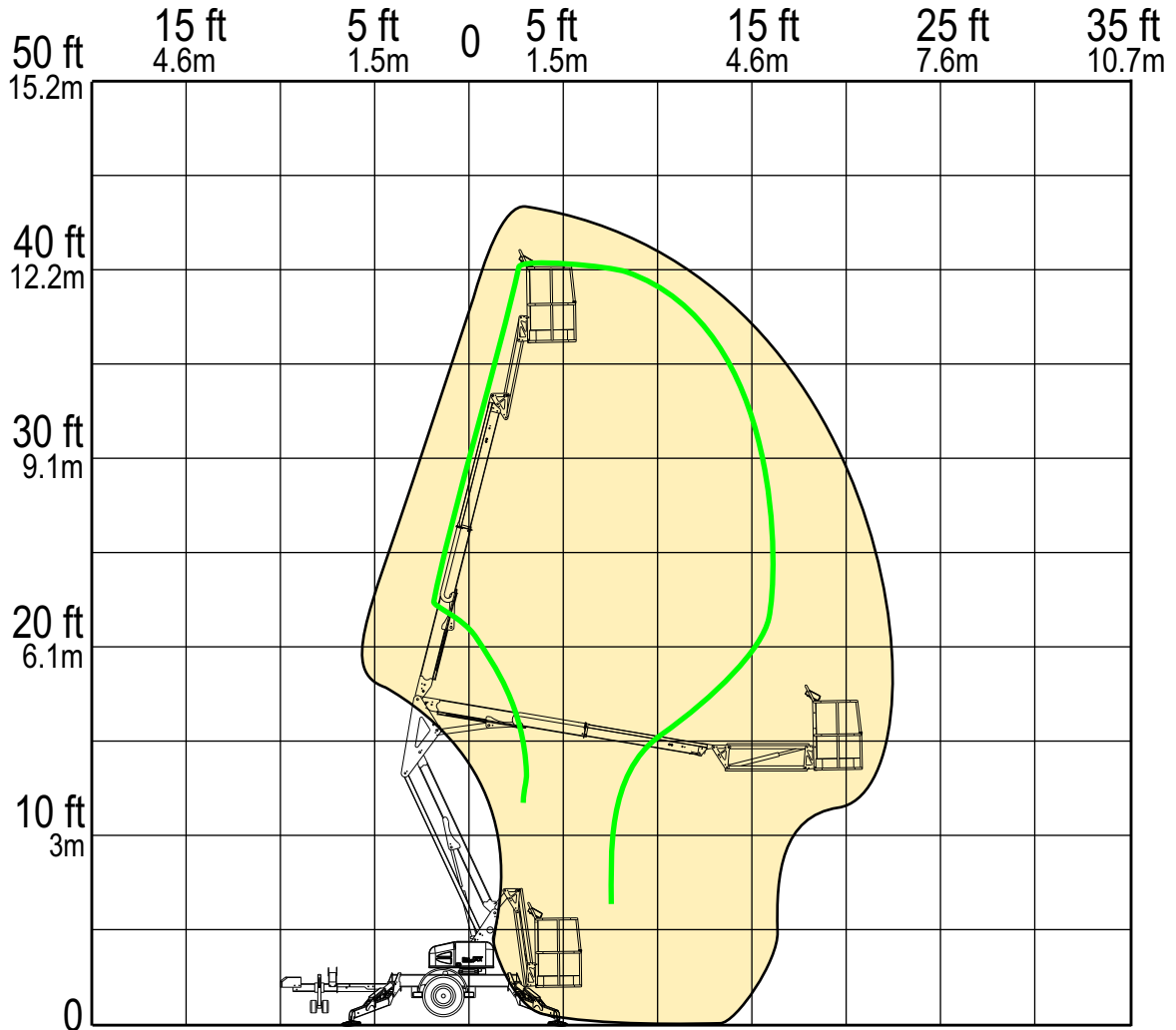
REACH MORE

MORE REACH

RANGE OF MOTION

**BIL-JAX 3522A
VS.
NIFTY LIFT TM 34**

OUTREACH (FROM CENTERLINE)



	BIL-JAX 3522A	NIFTY TM34
Max. Working Height	43 ft 2 in	40 ft 5 in
Max. Outreach (from centerline)	22 ft 6 in	16 ft 8 in

REACH MORE

MORE REACH