



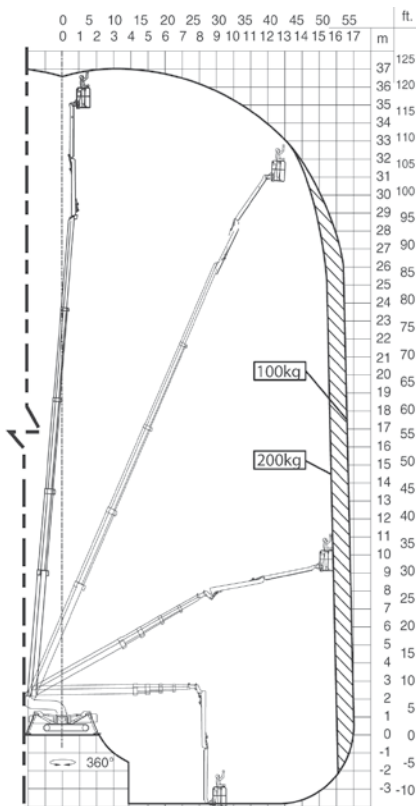
FS370C / FS420C FALCON SPIDER

Model:	FS370C	FS420C
Working height:	37 m	42 m
Maximum reach:	16-17 m	16-17 m
Linkarm (2 x 3 m):	6 m	6 m
Double linkarm:	200°	200°
Basket load:	200 kg	200 kg
Aluminium basket:	(0,8 x 1,4 m)	(0,8 x 1,4 m)
Basket rotation (option):	+/- 90°	+/- 90°
Turret rotation:	375°	375°
Dimensions (transport position)		
Total height:	2,10 m	2,10 m
Total length:	8,10 m	8,25 m
Total width:	1,22 m*	1,22 m*
Gradability (standard):	20° / 37%	20° / 37%
Weight approx.:	7,900 kg*	8,400 kg*

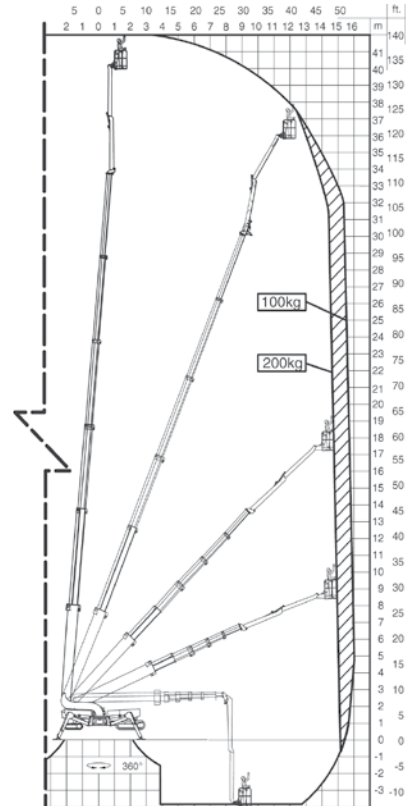
*Depending on optional equipment



FS370C



FS420C



Standard equipment:

- Automatic stability & outreach control
- Computer controlled (can-bus)
- Proportional control of all functions
- Self-propelled
- Battery powered with charger
- Double link-arm system
- 375° turret rotation, with integrated stop
- Individual setting of each outrigger
- Electronic checking of the power system (PLC)
- Manual pump system for emergency lowering
- Ability to self-load onto trucks or trailers
- Double crawler system
- Front crawler section adjustable
- Variable width
- Minimum width only 1,22 m
- Space for tools etc. in basket
- Storage room in chassis with lock
- Diesel engine, Lombardini (4-cyl)
- Chassis control from basket

Options:

- +/- 90° basket rotation
- 220V AC power supply in the basket
- Air / water supply in the basket
- Sensor system on basket
- Non markings belts
- Slope alarm
- 420V AC direct powered electro motor
- 4 pcs Extra batteries
- Autosetting / levelling from basket
- Portable control panel
- Special outrigger footplates
- Basket in various sizes
- Continuous turret rotation
- Special colour
- Height control switch
- Intercommunication system
- Anemometer wind warning system

Odense

Tolderlundsvej 106
DK-5000 Odense C
Phone +45 66 13 11 00
Fax +45 66 13 03 19

Holbæk

Højvang 5
DK-4300 Holbæk
Phone +45 59 45 55 00
Fax +45 59 44 21 55

www.wl-industries.com

We reserve the right to alterations

FALCK SCHMIDT SERIES • FALCON SERIES • DENKA SERIES

