



BIL-JAX 3522A vs Upright TL-33

Competitive Profile Worksheet

BIL-JAX Advantages

- Over 3 ft greater platform & working height.
- At least 6 1/2 ft greater centerline & usable outreach (from footpad edge).
- Negative angle upper boom geometry provides access to lower portion of working envelope.
- Greater turntable rotation.
- Greater load capacity.
- Slightly shorter stowed height.
- 2 ft shorter stowed length for greater maneuverability and access into space restricted areas. Quick disconnect platform can be removed to further reduce overall machine length to < 14 ft, providing up to a 4 1/2 ft shorter stowed length advantage.
- Larger platform.
- Optional platform rotator.
- Platform jib for superior platform positioning capabilities.
- Optional horizontal jib rotator.
- Hydraulic outriggers and optimized outrigger geometry provides greater leveling capability.
- Automatic leveling system.
- ReGEN hydraulic circuit provides faster outrigger deployment.
- Larger footpad diameter provides lower ground pressure.
- Significantly higher tow speed rating.
- Larger 14-inch tires.
- Greater amp-hour rating on batteries.
- More intuitive control system.
- Patent Pending Retractable Axle Option provides access through standard doorways and fence gates.
- Made in the USA.

Upright Advantages

- Published machine weight is 346 lbs lighter.
- 2 ft greater up and over height (clear reach).

Competitive Product Specifications		
	BIL-JAX	Upright
Specifications	3522A	TL-33
✓ Working height	43 ft 2 in	40 ft
✓ Maximum platform height	37 ft 2 in	34 ft
✓ Horizontal outreach		
✓ Maximum (from centerline)	22 ft 6 in	16 ft
✓ Maximum (from footpad edge)	17 ft 5 in	NP
Up and over height	19 ft	21 ft
✓ Turntable rotation	700° non-continuous	370° non-continuous
✓ Load capacity	500 lbs	475 lbs
✓ Height - stowed	76 3/4 in	78 in
✓ Length - stowed	16 ft 3 in	18 ft
Width - stowed	5 ft 5 1/2 in	5 ft
Platform		
Height	43 in	NP
✓ Length	30 in	24 in
✓ Width	48 in	47 in
✓ Rotation / type (optional)	90° / manual	---
✓ Jib		
✓ Length	4 ft 3 in	N/A
✓ Vertical motion	150° (+70 / -80)	N/A
✓ Horizontal rotation (optional)	180° / hydraulic	N/A
✓ Outrigger type	Hydraulic	Manual
✓ Leveling system	Auto Leveling	Manual Leveling
Leveling capability	12 1/2°	NP
Outrigger footprint - length	11 ft 3/4 in	NP
Outrigger footprint - width	9 ft 10 1/2 in	9 ft 10 in
Footpad diameter	10 in	---
✓ Tow speed rating	65 mph	45 mph
Tongue weight	190 lbs	NP
Surge brakes	Standard	---
Parking brake	Standard	---
✓ Tire size	ST 205/75 R14C	ST 185R 13C
Standard control system	24V DC	24V DC
✓ Batteries	4 x 6V 245 amp-hr	4 x 6V 220 amp-hr
Charger	25 amp	---
Total weight	3,080 lbs	2,734 lbs

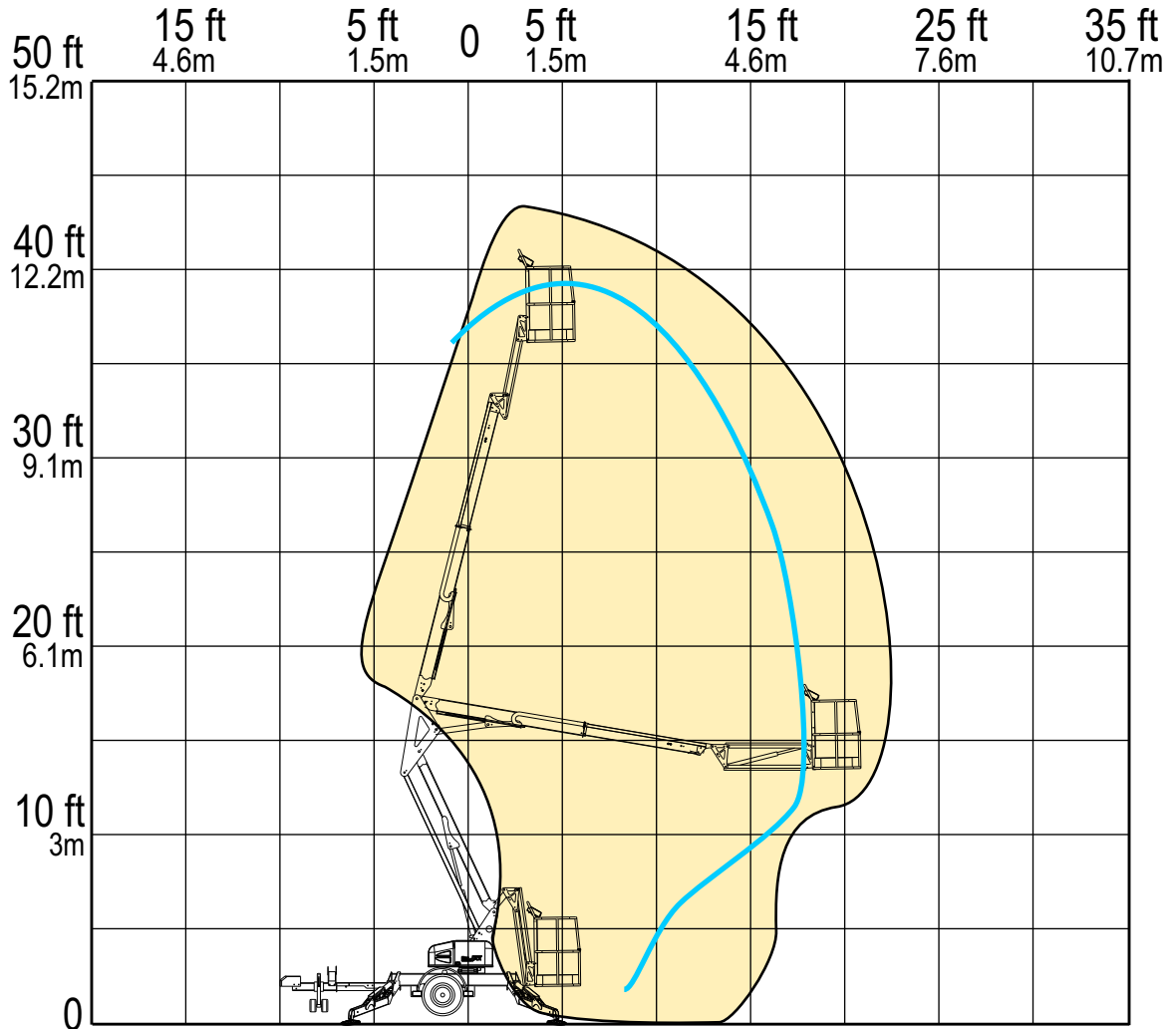
The BIL-JAX specifications listed above are based on physical measurements of prototype machines and are subject to change prior to production start-up.

Note: It appears that Upright has withdrawn this model from US distribution. It has been included in this manual for reference only.

RANGE OF MOTION

**BIL-JAX 3522A
VS.
UPRIGHT TL-33**

OUTREACH (FROM CENTERLINE)



	BIL-JAX 3522A	UPRIGHT TL-33
Max. Working Height	43 ft 2 in	39 ft 10 in
Max. Outreach (from centerline)	22 ft 6 in	16 ft 5 in

REACH MORE

MORE REACH