



BIL-JAX 5533A vs Genie TZ50

Competitive Profile Worksheet

BIL-JAX Advantages

- Over 6 ft greater platform & working height.
- Over 4 ft greater centerline and usable outreach (from footpad edge).
- Greater up and over height (clear reach).
- Negative angle upper boom geometry provides better access to lower portion of working envelope.
- Greater turntable rotation.
- Shorter stowed height allows access through double doorways.
- 1 1/2 ft shorter stowed length for greater maneuverability and access into space restricted areas. Quick disconnect platform can be removed to further reduce overall machine length to < 20 1/2 ft, providing up to a 4 ft shorter stowed length advantage.
- Slightly shorter stowed width.
- Larger platform.
- Greater platform rotation range of motion.
- Greater platform jib range of motion.
- Optional horizontal jib rotator.
- Optimized outrigger geometry provides greater leveling capability.
- ReGEN hydraulic circuit provides faster outrigger deployment.
- 1 1/2 ft narrower outrigger footprint provides the ability to set-up the machine in space restricted work areas.
- Larger footpad diameter provides lower ground pressure.
- Higher tow speed rating.
- Greater amp-hour rating on batteries.
- Greater charger amp output rating.
- Total machine weight is 70 lbs lighter.
- Multiple function speeds available at ground control box.
- More intuitive control system (refer to control system comparison tab).

Competitive Product Specifications		
	BIL-JAX	Genie
Specifications	5533A	TZ50
✓ Working height	61 ft 3 in	55 ft
✓ Maximum platform height	55 ft 3 in	49 ft
✓ Horizontal outreach		
✓ Maximum (from centerline)	33 ft 5 in	29 ft 2 in
✓ Maximum (from footpad edge)	27 ft 4 in	23 ft 1 in
✓ Up and over height	23 ft 1 in	22 ft
✓ Turntable rotation	700° non-continuous	359° non-continuous
Load capacity	500 lbs	500 lbs
✓ Height - stowed	78 in	82 in
✓ Length - stowed	22 ft 11 in	24 ft 3 in
✓ Width - stowed	5 ft 6 1/4 in	5 ft 8 in
Platform		
Height	43 in	44 in
✓ Length	30 in	27 in
✓ Width	48 in	44 in
✓ Rotation / type (optional)	90° / manual	80° / manual
✓ Jib		
✓ Length	4 ft 3 in	4 ft 1 in
✓ Vertical motion	150° (+70 / -80)	135°
✓ Horizontal rotation (optional)	180° / hydraulic	N/A
Outrigger type	Hydraulic	Hydraulic
Leveling system	Auto Leveling	Auto Leveling
✓ Leveling capability	12 1/2°	10°
✓ Outrigger footprint - length	12 ft 11 in	14 ft 4 in
✓ Outrigger footprint - width	12 ft 9 in	14 ft 4 in
✓ Footpad diameter	12 1/2 in	11 1/2 in
✓ Tow speed rating	65 mph	60 mph
Tongue weight	270 lbs	580 lbs
Surge brakes	Standard	Standard
Parking brake	Standard	Standard
Tire size	ST 225/75 R15D	ST 225/75 D15
Standard control system	24V DC	24V DC
✓ Batteries	4 x 6V 245 amp-hr	4 x 6V 225 amp-hr
✓ Charger	40 amp	20 amp
✓ Total weight	4,400 lbs	4,470 lbs

The BIL-JAX specifications listed above are based on physical measurements of prototype machines and are subject to change prior to production start-up.



Competitive Profile Worksheet

BIL-JAX 5533A vs Genie TZ50

Continued - refer to prior page for more BIL-JAX advantages.

BIL-JAX Advantages (continued)

Refer to prior page for more BIL-JAX advantages.

- Multiple functions can be actuated simultaneously (i.e. turntable rotate plus lift or lower, etc).

Genie Advantages

- Gussets and overall construction makes the platform weldment & jib connection points appear more robust.
- Because of less outreach, upper boom has less deflection.

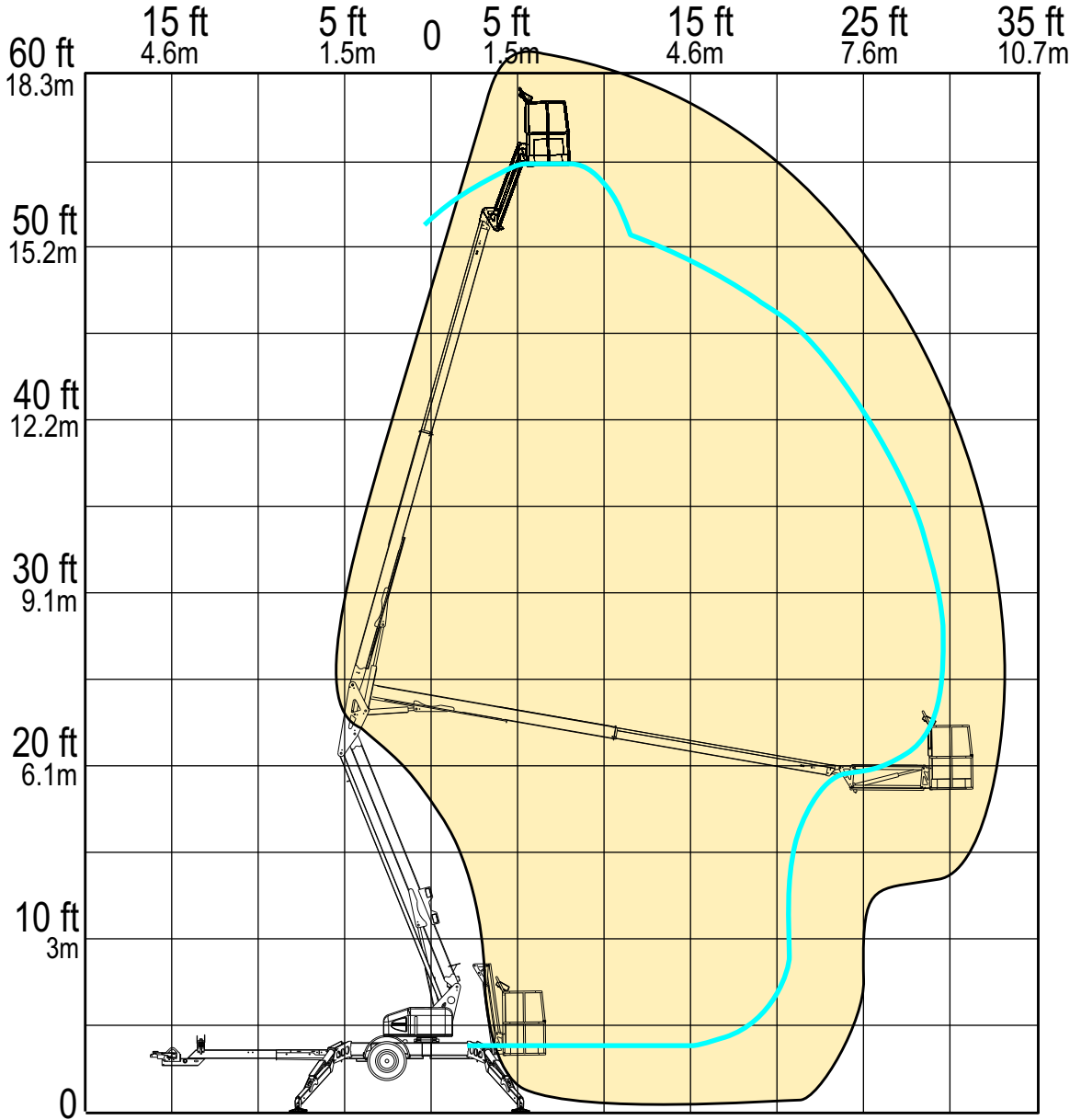
Competitive Product Specifications		
	BIL-JAX	Genie
Specifications	5533A	TZ50
✓ Working height	61 ft 3 in	55 ft
✓ Maximum platform height	55 ft 3 in	49 ft
✓ Horizontal outreach		
✓ Maximum (from centerline)	33 ft 5 in	29 ft 2 in
✓ Maximum (from footpad edge)	27 ft 4 in	23 ft 1 in
✓ Up and over height	23 ft 1 in	22 ft
✓ Turntable rotation	700° non-continuous	359° non-continuous
Load capacity	500 lbs	500 lbs
✓ Height - stowed	78 in	82 in
✓ Length - stowed	22 ft 11 in	24 ft 3 in
✓ Width - stowed	5 ft 6 1/4 in	5 ft 8 in
Platform		
Height	43 in	44 in
✓ Length	30 in	27 in
✓ Width	48 in	44 in
✓ Rotation / type (optional)	90° / manual	80° / manual
✓ Jib		
✓ Length	4 ft 3 in	4 ft 1 in
✓ Vertical motion	150° (+70 / -80)	135°
✓ Horizontal rotation (optional)	180° / hydraulic	N/A
Outrigger type	Hydraulic	Hydraulic
Leveling system	Auto Leveling	Auto Leveling
✓ Leveling capability	12 1/2°	10°
✓ Outrigger footprint - length	12 ft 11 in	14 ft 4 in
✓ Outrigger footprint - width	12 ft 9 in	14 ft 4 in
✓ Footpad diameter	12 1/2 in	11 1/2 in
✓ Tow speed rating	65 mph	60 mph
Tongue weight	270 lbs	580 lbs
Surge brakes	Standard	Standard
Parking brake	Standard	Standard
Tire size	ST 225/75 R15D	ST 225/75 D15
Standard control system	24V DC	24V DC
✓ Batteries	4 x 6V 245 amp-hr	4 x 6V 225 amp-hr
✓ Charger	40 amp	20 amp
✓ Total weight	4,400 lbs	4,470 lbs

The BIL-JAX specifications listed above are based on physical measurements of prototype machines and are subject to change prior to production start-up.

RANGE OF MOTION

**BIL-JAX 5533A
VS.
GENIE TZ50**

OUTREACH (FROM CENTERLINE)



	BIL-JAX 5533A	GENIE TZ50
Max. Working Height	61 ft 3 in	55 ft
Max. Outreach (from centerline)	33 ft 5 in	29 ft 2 in

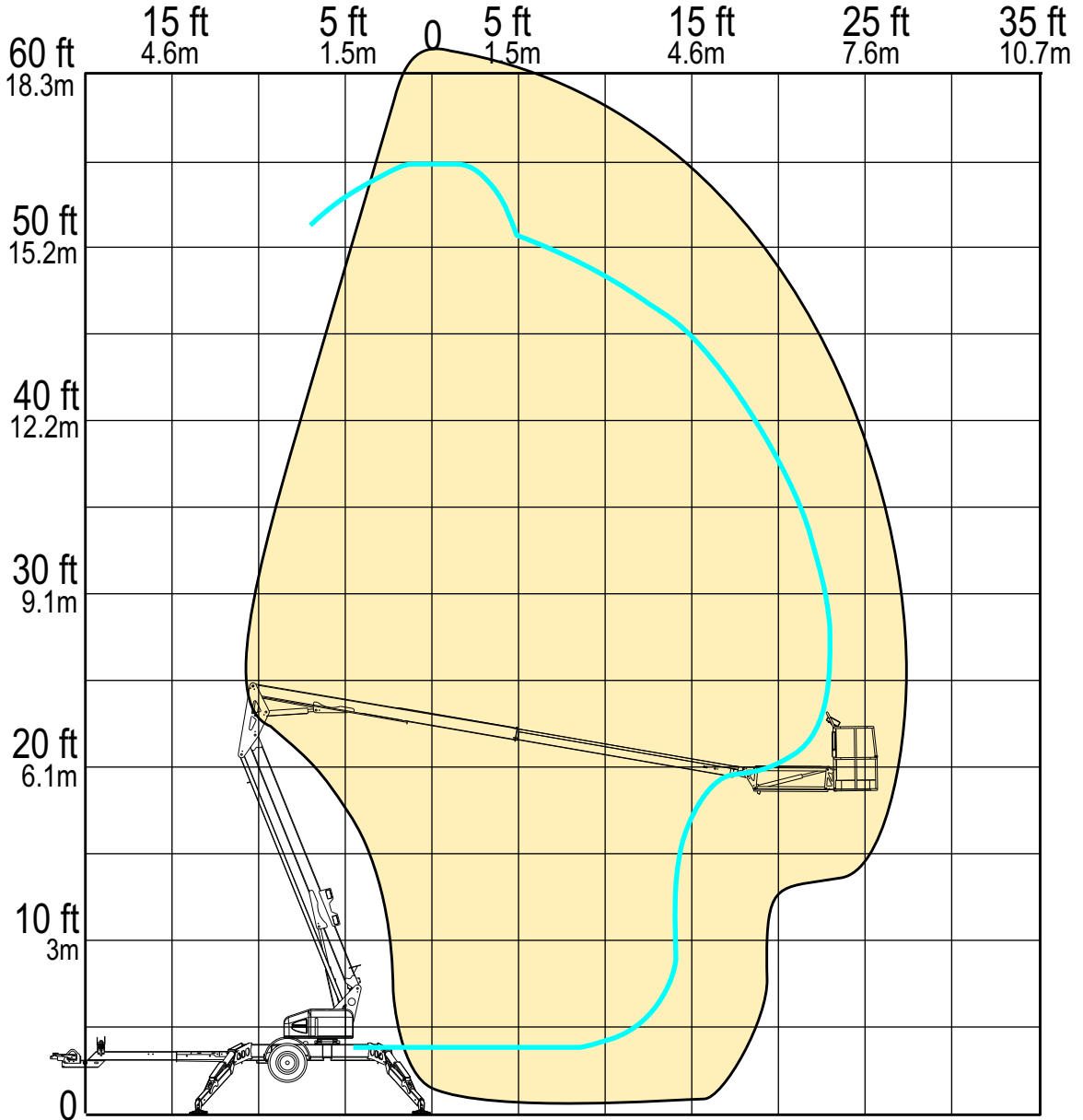
REACH MORE

MORE REACH

RANGE OF MOTION

**BIL-JAX 5533A
VS.
GENIE TZ50**

USABLE OUTREACH (FROM OUTRIGGER FOOTPAD)



	BIL-JAX 5533A	GENIE TZ50
Max. Working Height	61 ft 3 in	55 ft
Max. Outreach (from outrigger footpad)	27 ft 4 in	23 ft

REACH MORE

MORE REACH