



BIL-JAX 5533A vs NiftyLift TM50

Competitive Profile Worksheet

BIL-JAX Advantages

- 6 ft greater platform & working height.
- At least 5 ft greater centerline & usable outreach (from footpad edge).
- 3 ft greater up and over height (clear reach).
- Greater turntable rotation.
- Shorter stowed height allows access through double doorways.
- Quick disconnect platform can be easily removed to reduce overall machine length to 20 1/2 ft.
- Larger platform.
- Greater platform rotation range of motion.
- Platform jib for superior platform positioning capabilities.
- Optional horizontal jib rotator.
- Automatic leveling system.
- Optimized outrigger geometry provides greater leveling capability.
- ReGEN hydraulic circuit provides faster outrigger deployment.
- 1 1/2 ft narrower outrigger footprint provides the ability to set-up the machine in space restricted work areas.
- Larger footpad diameter provides lower ground pressure.
- Higher tow speed rating.
- More intuitive control system.
- Significantly less hoses and fittings reduces potential leak points.
- Made in USA.

NiftyLift Advantages

- Shorter stowed length for easier maneuverability.*
- Slightly shorter stowed width.
- Hydraulic platform rotator versus manual.

Competitive Product Specifications		
	BIL-JAX	NiftyLift
Specifications	5533A	TM50
✓ Working height	61 ft 3 in	55 ft 6 in
✓ Maximum platform height	55 ft 3 in	49 ft 6 in
✓ Horizontal outreach		
✓ Maximum (from centerline)	33 ft 5 in	28 ft 6 in
✓ Maximum (from footpad edge)	27 ft 4 in	NP
✓ Up and over height	23 ft 1 in	20 ft 6 in
✓ Turntable rotation	700° non-continuous	360° non-continuous
Load capacity	500 lbs	500 lbs
✓ Height - stowed	78 in	85 in
Length - stowed	22 ft 11 in	20 ft 4 in
Width - stowed	5 ft 6 1/4 in	5 ft 3 in
Platform		
Height	43 in	NP
✓ Length	30 in	25 in
✓ Width	48 in	44 in
✓ Rotation / type (optional)	90° / manual	50° / hydraulic
✓ Jib		
✓ Length	4 ft 3 in	N/A
✓ Vertical motion	150° (+70 / -80)	N/A
✓ Horizontal rotation (optional)	180° / hydraulic	N/A
Outrigger type	Hydraulic	Hydraulic
✓ Leveling system	Auto Leveling	Manual Leveling
✓ Leveling capability	12 1/2°	NP
Outrigger footprint - length	12 ft 11 in	NP
✓ Outrigger footprint - width	12 ft 9 in	14 ft 4 in
✓ Footpad diameter	12 1/2 in	NP
✓ Tow speed rating	65 mph	45 mph
Tongue weight	270 lbs	NP
Surge brakes	Standard	Standard
Parking brake	Standard	Standard
Tire size	ST 225/75 R15D	N/P
Standard control system	24V DC	---
Batteries	4 x 6V 245 amp-hr	---
Charger	40 amp	---
Total weight	4,400 lbs	4,400 lbs

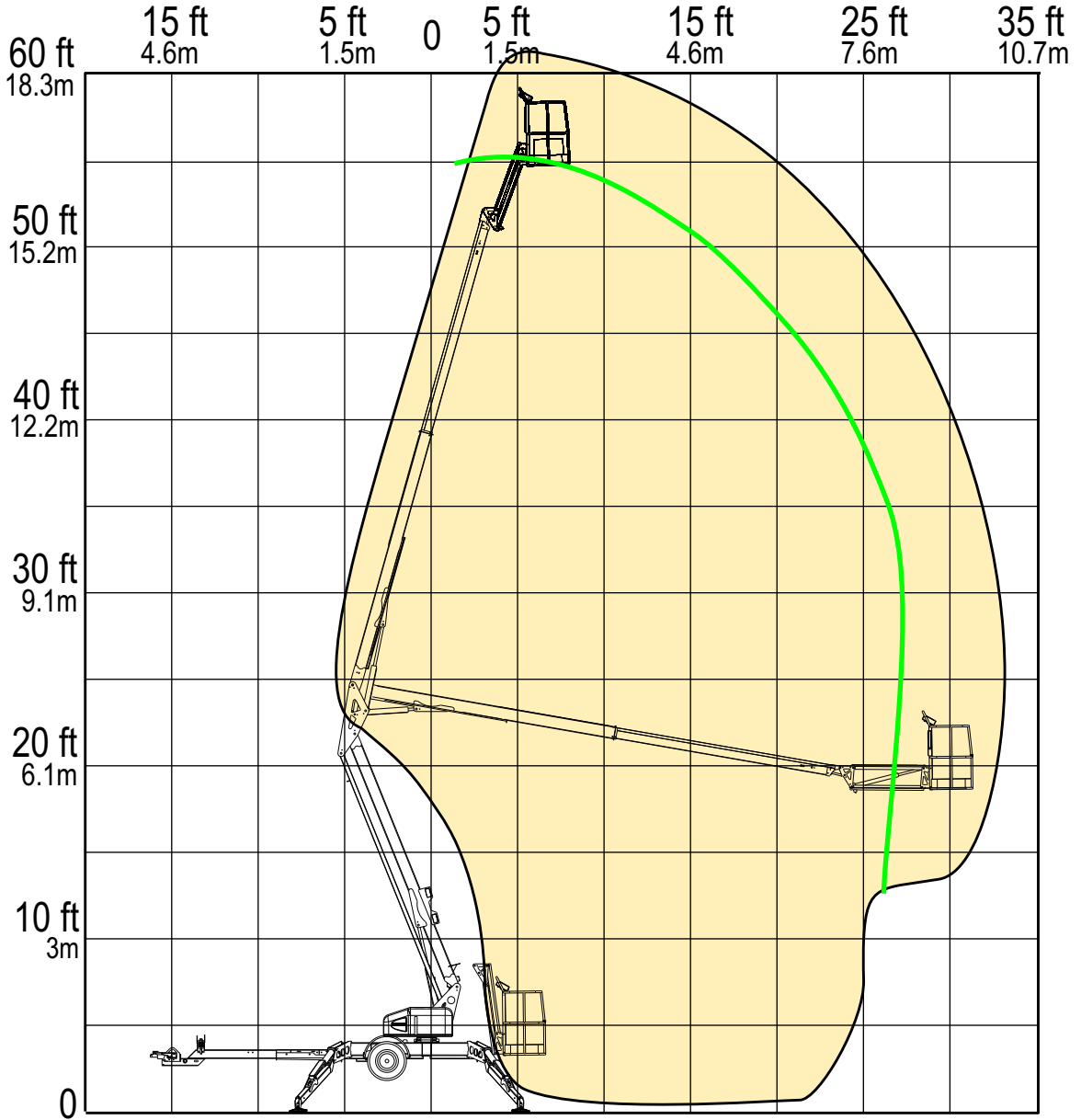
The BIL-JAX specifications listed above are based on physical measurements of prototype machines and are subject to change prior to production start-up.

*Note: The stowed length of the BIL-JAX model can be made 30 inches shorter when platform is removed (i.e. for restricted access points, etc.).

RANGE OF MOTION

**BIL-JAX 5533A
VS.
NIFTY LIFT TM50**

OUTREACH (FROM CENTERLINE)



	BIL-JAX 5533A	NIFTY TM50
Max. Working Height	61 ft 3 in	55 ft 6 in
Max. Outreach (from centerline)	33 ft 5 in	28 ft 6 in

REACH MORE

MORE REACH