

Competitive Profile Worksheet

BIL-JAX Advantages

- Over 5 ft greater platform & working height.
- 2 1/2 ft greater centerline outreach.
- 4 ft greater usable outreach (from footpad edge).
- Upper & lower booms can be controlled separately for superior platform positioning capability.
- 5 ft greater up and over height (clear reach).
- Greater turntable rotation.
- 4 1/2 ft shorter stowed length for greater maneuverability and access into space restricted areas. Quick disconnect platform can be removed to further reduce overall machine length to < 20 1/2 ft, providing up to a 7 ft shorter stowed length advantage.
- Greater platform jib range of motion.
- Optional horizontal jib rotator.
- Optimized outrigger geometry provides greater leveling capability.
- ReGEN hydraulic circuit provides faster outrigger deployment.
- Individual outrigger controls provide for more versatility, allowing hyper-extension of outriggers for extra platform height and up and over clearance. Also maximizes leveling capability.
- Larger footpad diameter provides lower ground pressure.
- Greater amp-hour rating on batteries.
- Total machine weight is 780 lbs lighter.
- Multi-function capable (i.e. turntable rotation and lift or lower functions can be actuated simultaneously).
- Multiple function speeds available at ground control box.
- Sealed push button mechanical switches versus plastic toggle switches.
- More intuitive control system. (refer to control system comparison tab).

Competitive Product Specifications		
	BIL-JAX	JLG
Specifications	5533A	T500J
✓ Working height	61 ft 3 in	56 ft
✓ Maximum platform height	55 ft 3 in	50 ft
✓ Horizontal outreach		
✓ Maximum (from centerline)	33 ft 5 in	31 ft 6 in
✓ Maximum (from footpad edge)	27 ft 4 in	23 ft 5 in
✓ Up and over height	23 ft 1 in	18 ft
✓ Turntable rotation	700° non-continuous	410° non-continuous
Load capacity	500 lbs	500 lbs
Height - stowed	78 in	78 in
✓ Length - stowed	22 ft 11 in	27 ft 5 in
Width - stowed	5 ft 6 1/4 in	5 ft 7 in
Platform		
Height	43 in	NP
Length	30 in	30 ft
Width	48 in	48 ft
Rotation / type (optional)	90° / manual	90° / manual
✓ Jib		
✓ Length	4 ft 3 in	4 ft
✓ Vertical motion	150° (+70 / -80)	130° (+75, -55)
✓ Horizontal rotation (optional)	180° / hydraulic	N/A
Outrigger type	Hydraulic	Hydraulic
Leveling system	Auto Leveling	Auto Leveling
✓ Leveling capability	12 1/2°	11°
Outrigger footprint - length	12 ft 11 in	12 ft 11 in
Outrigger footprint - width	12 ft 9 in	12 ft 4 in
✓ Footpad diameter	12 1/2 in	10 1/2 in
Tow speed rating	65 lbs	65 lbs
Tongue weight	270	350 ft
Surge brakes	Standard	Standard
Parking brake	Standard	Standard
Tire size	ST 225/75 R15D	ST 225/75 D15
Standard control system	24V DC	24V DC
✓ Batteries	4 x 6V 245 amp-hr	4 x 6V 220 amp-hr
Charger	40 amp	NP
✓ Total weight	4,400 lbs	5,180 lbs

The BIL-JAX specifications listed above are based on physical measurements of prototype machines and are subject to change prior to production start-up.



Competitive Profile Worksheet

BIL-JAX 5533A vs JLG T500J

Continued - refer to prior page for more BIL-JAX advantages.

BIL-JAX Advantages (continued)

Refer to prior page for more BIL-JAX advantages.

- Robust steel outrigger cylinder guards vs. thin plastic tubing.
- Dual foam filled jockey wheels vs. plastic wheels.
- Material lift option is overload protected by a strain gauge versus a pressure relief valve providing a more effective deterrent against overloading and also provides load weight information on the display panel.
- DC/Gas hybrid model and drive & set option available.
- Non-marking outrigger footpads and custom aluminum rims are standard equipment.
- No overlap in rotation ensures platform stowage at zero degree starting point.
- Platform stowed in best access starting position. No need to rotate turntable 180-degrees to achieve maximum outreach.

JLG Advantages

- Proportional joystick controls in platform.
- Platform control box has molded handles for ease of handling when in material lift mode.
- Slightly better centerline outreach in lower platform height range (but usable outreach in lower height range is nearly equivalent).
- Curve of envelope ideal to move straight up a wall.

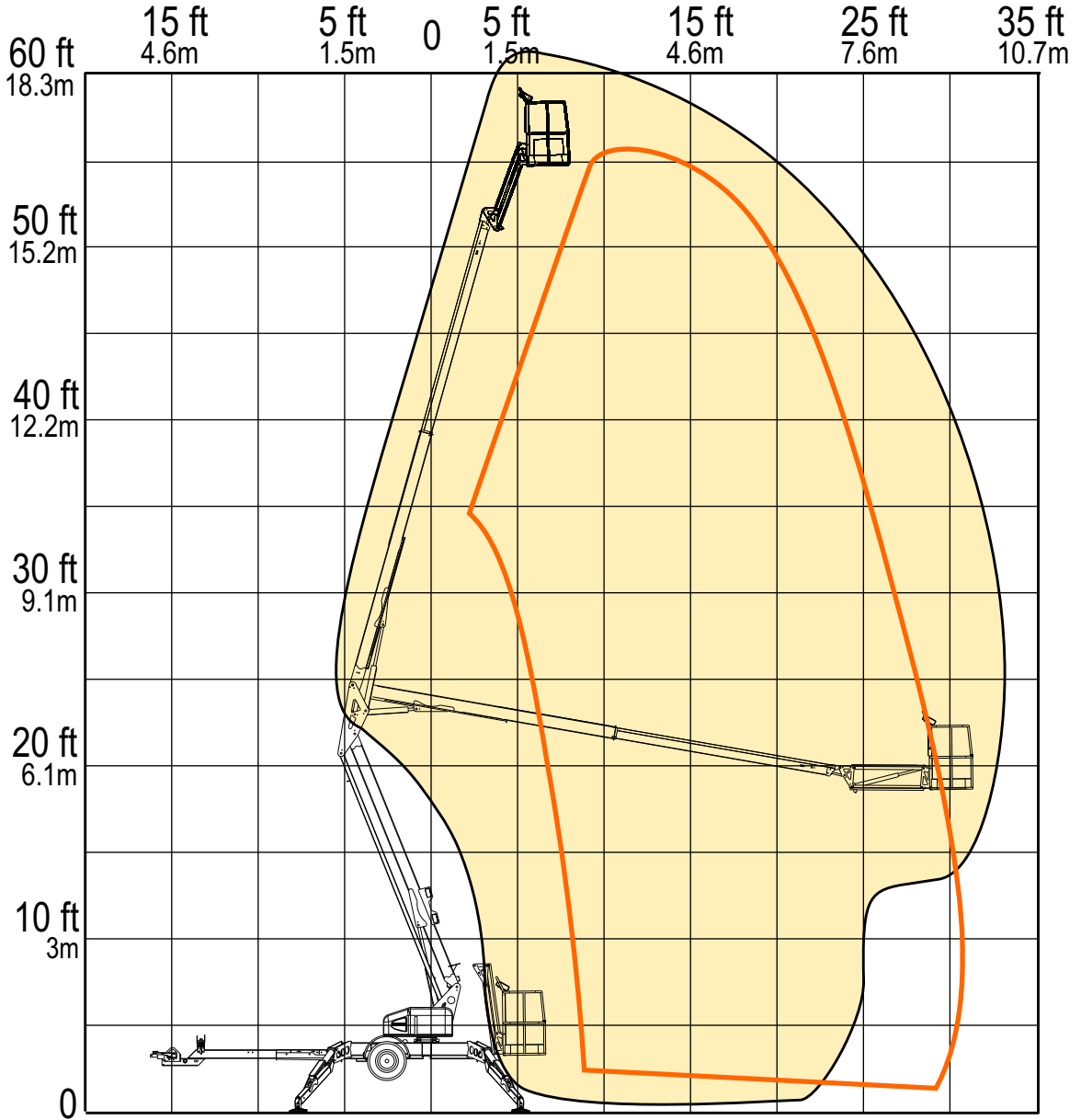
Competitive Product Specifications		
	BIL-JAX	JLG
Specifications	5533A	T500J
✓ Working height	61 ft 3 in	56 ft
✓ Maximum platform height	55 ft 3 in	50 ft
✓ Horizontal outreach		
✓ Maximum (from centerline)	33 ft 5 in	31 ft 6 in
✓ Maximum (from footpad edge)	27 ft 4 in	23 ft 5 in
✓ Up and over height	23 ft 1 in	18 ft
✓ Turntable rotation	700° non-continuous	410° non-continuous
Load capacity	500 lbs	500 lbs
Height - stowed	78 in	78 in
✓ Length - stowed	22 ft 11 in	27 ft 5 in
Width - stowed	5 ft 6 1/4 in	5 ft 7 in
Platform		
Height	43 in	NP
Length	30 in	30 ft
Width	48 in	48 ft
Rotation / type (optional)	90° / manual	90° / manual
✓ Jib		
✓ Length	4 ft 3 in	4 ft
✓ Vertical motion	150° (+70 / -80)	130° (+75, -55)
✓ Horizontal rotation (optional)	180° / hydraulic	N/A
Outrigger type	Hydraulic	Hydraulic
Leveling system	Auto Leveling	Auto Leveling
✓ Leveling capability	12 1/2°	11°
✓ Outrigger footprint - length	12 ft 11 in	12 ft 11 in
✓ Outrigger footprint - width	12 ft 9 in	12 ft 4 in
✓ Footpad diameter	12 1/2 in	10 1/2 in
Tow speed rating	65 lbs	65 lbs
Tongue weight	270	350 ft
Surge brakes	Standard	Standard
Parking brake	Standard	Standard
Tire size	ST 225/75 R15D	ST 225/75 D15
Standard control system	24V DC	24V DC
✓ Batteries	4 x 6V 245 amp-hr	4 x 6V 220 amp-hr
Charger	40 amp	NP
✓ Total weight	4,400 lbs	5,180 lbs

The BIL-JAX specifications listed above are based on physical measurements of prototype machines and are subject to change prior to production start-up.

RANGE OF MOTION

**BIL-JAX 5533A
VS.
JLG T500J**

OUTREACH (FROM CENTERLINE)



	BIL-JAX 5533A	JLG T500J
Max. Working Height	61 ft 3 in	56 ft
Max. Outreach (from centerline)	33 ft 5 in	31 ft 6 in

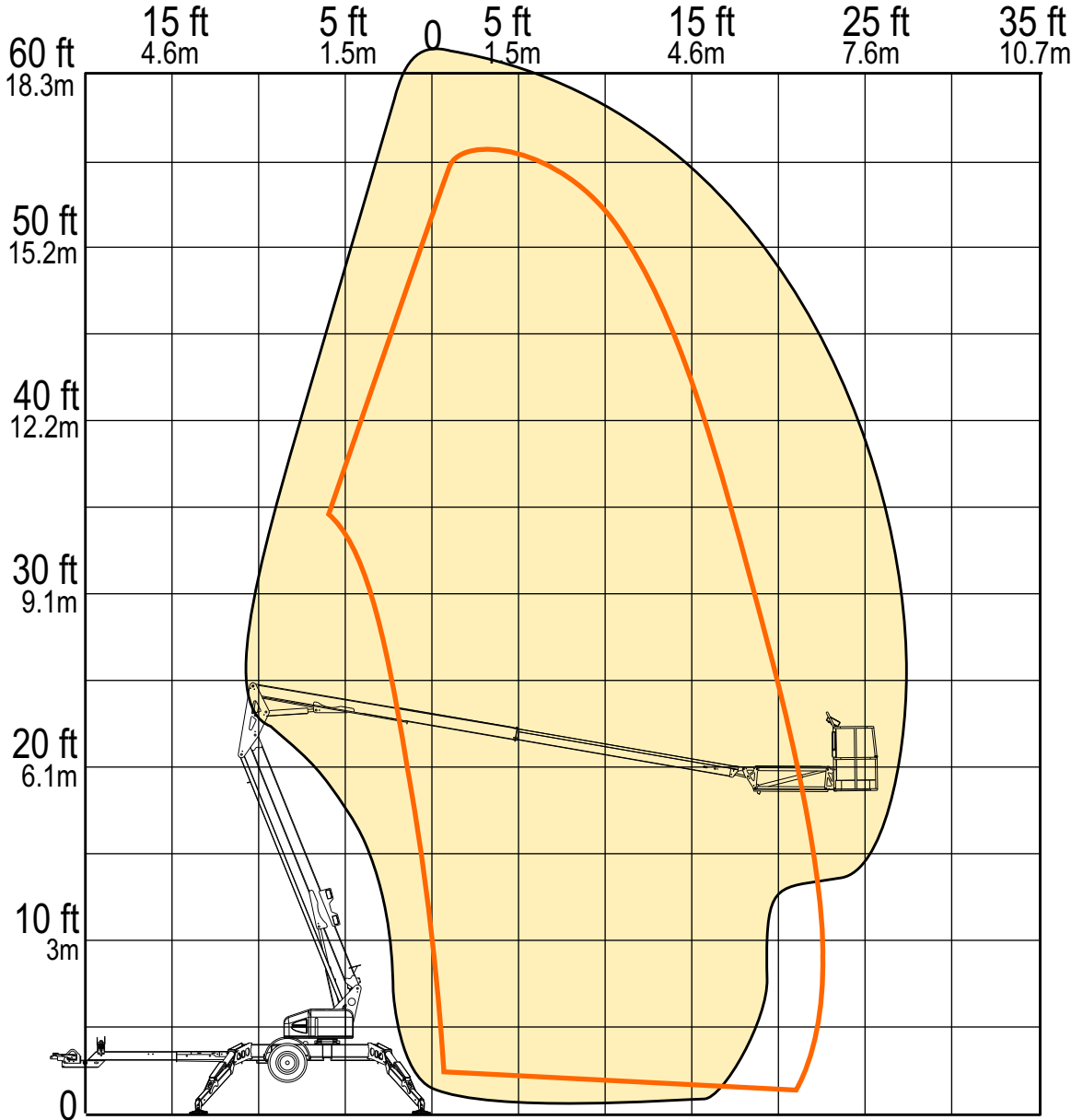
REACH MORE

MORE REACH

RANGE OF MOTION

**BIL-JAX 5533A
VS.
JLG T500J**

USABLE OUTREACH (FROM OUTRIGGER FOOTPAD)



	BIL-JAX 5533A	JLG T500J
Max. Working Height	61 ft 3 in	56 ft
Max. Outreach (from outrigger footpad)	27 ft 4 in	23 ft 5 in

REACH MORE

MORE REACH