



BIL-JAX 4527A vs NiftyLift TM40

Competitive Profile Worksheet

BIL-JAX Advantages

- 5 ft greater platform & working height.
- At least 6 ft greater centerline and usable outreach (from footpad edge).
- Negative angle upper boom geometry and telescopic extension boom provide superior access to lower portion of working envelope.
- Greater turntable rotation.
- Slightly shorter stowed height.
- 3 ft shorter stowed length for greater maneuverability and access into space restricted areas. Quick disconnect platform can be removed to further reduce overall machine length to 17 ft, providing up to a 5 1/2 ft shorter stowed length advantage.
- Optional horizontal jib rotator.
- Automatic leveling system.
- Optimized outrigger geometry provides greater leveling capability.
- ReGEN hydraulic circuit provides faster outrigger deployment.
- Larger footpad diameter provides lower ground pressure.
- Significantly higher tow speed rating.
- More intuitive control system.
- Significantly less hoses and fittings reduces potential leak points.
- Comparable price range with superior specifications and features.
- Made in USA.

NiftyLift Advantages

- Larger overall platform size.
- Smaller outrigger footprint [shorter lift].
- Published machine weight is 600 lbs lighter.

Competitive Product Specifications		
	BIL-JAX	NiftyLift
Specifications	4527A	TM40
✓ Working height	51 ft	46 ft 2 in
✓ Maximum platform height	45 ft	40 ft 2 in
✓ Horizontal outreach		
✓ Maximum (from centerline)	27 ft	21 ft
✓ Maximum (from footpad edge)	21 ft	NP
Up and over height	20 ft 9 in	NP
✓ Turntable rotation	700° non-continuous	360° non-continuous
Load capacity	500 lbs	500 lbs
✓ Height - stowed	76 3/4 in	78 in
✓ Length - stowed	19 ft 6 in	22 ft 2 in
Width - stowed	5 ft 5 1/2 in	5 ft 3 in
Platform		
Height	43 in	NP
✓ Length	30 in	29 in
Width	48 in	59 in
Rotation / type (optional)	90° / manual	NP
Jib		
Length	4 ft 3 in	NP
Vertical motion	150° (+70 / -80)	150°
✓ Horizontal rotation (optional)	180° / hydraulic	N/A
Outrigger type	Hydraulic	Hydraulic
✓ Leveling system	Auto Leveling	Manual Leveling
✓ Leveling capability	13 1/2°	NP
Outrigger footprint - length	12 ft 4 in	NP
Outrigger footprint - width	11 ft 4 in	10 ft 6 in
✓ Footpad diameter	12 1/2 in	NP
✓ Tow speed rating	65 mph	45 mph
Tongue weight	170 lbs	NP
Surge brakes	Standard	Standard
Difference	Standard	Standard
Tire size	ST 225/75 R15D	NP
Standard control system	24V DC	NP
Batteries	4 x 6V 245 amp-hr	NP
Charger	40 amp	NP
Total weight	3,880 lbs	3,265 lbs

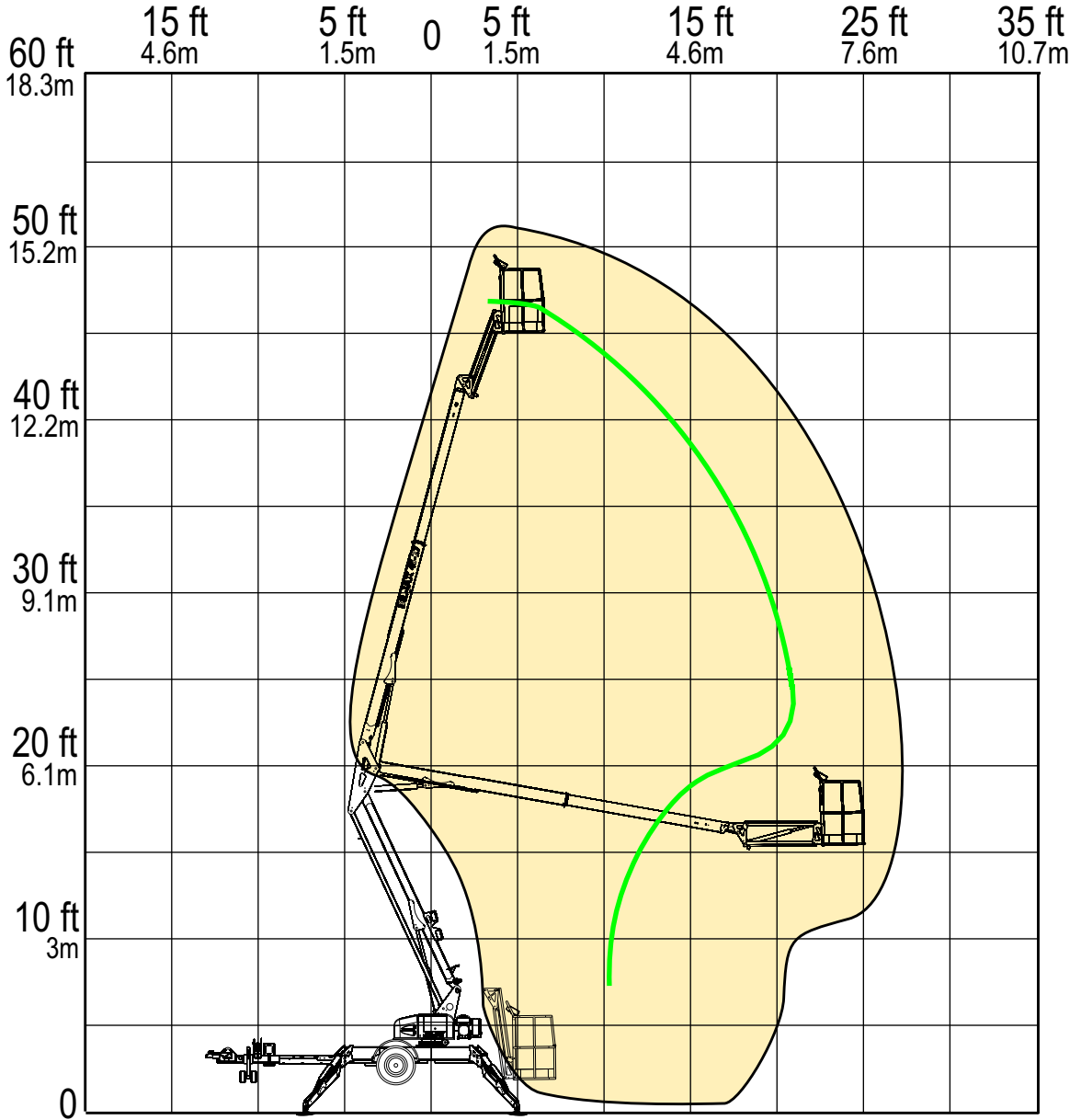
The BIL-JAX specifications listed above are based on physical measurements of prototype machines and are subject to change prior to production start-up.

RANGE OF MOTION

**BIL-JAX 4527A
VS.
NIFTY LIFT TM40**

OUTREACH

(FROM CENTERLINE)



	BIL-JAX 4527A	NIFTY TM40
Max. Working Height	51 ft	46 ft 9 in
Max. Outreach (from centerline)	27 ft	21 ft

REACH MORE

MORE REACH