



BIL-JAX 4527A vs Upright TL-38

Competitive Profile Worksheet

BIL-JAX Advantages

- Nearly 7 ft greater platform & working height
- Over 8 1/2 ft greater centerline & usable outreach (from footpad edge).
- 7 ft greater up and over height (clear reach).
- Negative angle upper boom geometry and telescopic upper boom extension provide greater outreach in lower portion of working envelope.
- Greater turntable rotation.
- Greater load capacity.
- Slightly shorter stowed height.
- Equivalent stowed length but quick disconnect platform can be easily removed to reduce overall machine length to 17 ft, providing a 2 1/2 ft shorter stowed length advantage.
- Larger platform.
- Optional horizontal jib rotator.
- Hydraulic outriggers.
- Automatic leveling system.
- Optimized outrigger geometry provides greater leveling capability.
- ReGEN hydraulic circuit provides faster outrigger deployment.
- Larger footpad diameter provides lower ground pressure.
- Larger 15-inch tires.
- Greater amp-hour rating on batteries.
- More intuitive control system.
- Made in USA.

Upright Advantages

- Slightly shorter stowed width.
- Smaller outrigger footprint width [shorter lift].
- Published machine weight is 646 lbs. lighter
- Proportional controls in platform.

Competitive Product Specifications		
	BIL-JAX	Upright
Specifications	4527A	TL-38
✓ Working height	51 ft	43 ft 9 in
✓ Maximum platform height	45 ft	37 ft 9 in
✓ Horizontal outreach		
✓ Maximum (from centerline)	27 ft	18 ft 4 in
✓ Maximum (from footpad edge)	21 ft	NP
✓ Up and over height	20 ft 9 in	14 ft
✓ Turntable rotation	700° non-continuous	370° non-continuous
✓ Load capacity	500 lbs	475 lbs
✓ Height - stowed	76 3/4 in	78 in
✓ Length - stowed	19 ft 6 in	19 ft 7 in
Width - stowed	5 ft 5 1/2 in	5 ft
Platform		
Height	43 in	NP
✓ Length	30 in	24 ft
Width	48 in	48 ft
Rotation / type (optional)	90° / manual	---
Jib		
Length	4 ft 3 in	4 ft
Vertical motion	150° (+70 / -80)	NP
✓ Horizontal rotation (optional)	180° / hydraulic	N/A
✓ Outrigger type	Hydraulic	Manual
✓ Leveling system	Auto Leveling	Manual Leveling
✓ Leveling capability	13 1/2°	NP
Outrigger footprint - length	12 ft 4 in	NP
Outrigger footprint - width	11 ft 4 in	10 ft 10 in
✓ Footpad diameter	12 1/2 in	NP
✓ Tow speed rating	65 lbs	N/P
Tongue weight	170 lbs	NP
Surge brakes	Standard	Standard
Parking brake	Standard	Standard
✓ Tire size	ST 225/75 R15D	ST 185R 13C
Standard control system	24V DC	24V DC
✓ Batteries	4 x 6V 245 amp-hr	4 x 6V 220 amp-hr
Charger	40 amp	NP
✓ Total weight	3,880 lbs	3,234 lbs

The BIL-JAX specifications listed above are based on physical measurements of prototype machines and are subject to change prior to production start-up.

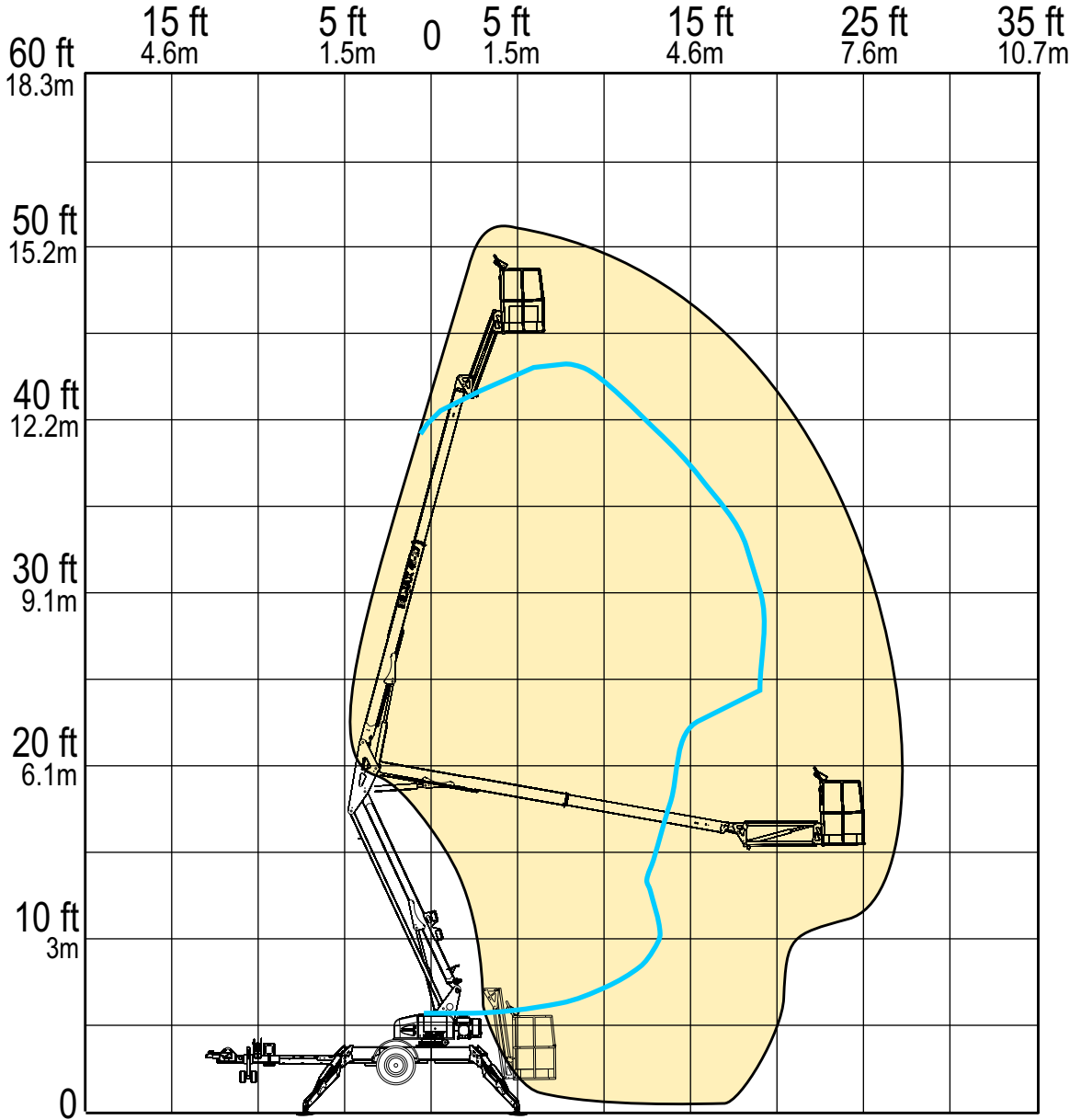
Note: It appears that Upright has withdrawn this model from US distribution. It has been included in this manual for reference should they re-establish distribution at some future point.

RANGE OF MOTION

**BIL-JAX 4527A
VS.
UPRIGHT TL-38**

OUTREACH

(FROM CENTERLINE)



	BIL-JAX 4527A	UPRIGHT TL-38
Max. Working Height	51 ft	43 ft 9 in
Max. Outreach (from centerline)	27 ft	18 ft 4 in

REACH MORE

MORE REACH