



BIL-JAX 4527A vs Hidro-Grubert BL-50/TEL

Competitive Profile Worksheet

BIL-JAX Advantages

- 1 ft greater platform & working height.
- Estimate comparable or better usable outreach (from footpad edge).
- 2 ft greater up and over height (clear reach).
- 50 lbs greater load capacity.
- Stowed height allows access through double doorways.
- Quick disconnect platform can be easily removed to reduce overall machine length to 17 ft.
- Substantially larger platform.
- Available platform rotation option.
- Platform jib for superior platform positioning capabilities.
- Optional horizontal jib rotator.
- Automatic leveling system.
- Optimized outrigger geometry provides greater leveling capability.
- ReGEN hydraulic circuit provides faster outrigger deployment.
- 2 ft narrower outrigger footprint width provides the ability to set-up the machine in space restricted work areas.
- Higher tow speed rating.
- Total machine weight is 520 lbs lighter.
- Significantly less hoses and fittings reduces potential leak points.
- More intuitive control system.
- Made in USA.

Note:

More information on Hidro-Grubert needed to identify additional BIL-JAX advantages.

Hidro-Grubert Advantages

- Continuous turntable rotation.
- 6-inch greater centerline outreach.

Competitive Product Specifications		
	BIL-JAX	Hidro-Grubert
Specifications	4527A	BL-50TEL
✓ Working height	51 ft	50 ft
✓ Maximum platform height	45 ft	44 ft
Horizontal outreach		
Maximum (from centerline)	27 ft	27 ft 6 in
Maximum (from footpad edge)	21 ft	NP
✓ Up and over height	20 ft 9 in	19 ft
Turntable rotation	700° non-continuous	360° continuous
✓ Load capacity	500 lbs	450 lbs
✓ Height - stowed	76 3/4 in	83 in
Length - stowed	19 ft 6 in	NP
Width - stowed	5 ft 5 1/2 in	NP
Platform		
Height	43 in	42 in
✓ Length	30 in	24 in
✓ Width	48 in	24 in
✓ Rotation / type (optional)	90° / manual	---
✓ Jib		
✓ Length	4 ft 3 in	N/A
✓ Vertical motion	150° (+70 / -80)	N/A
✓ Horizontal rotation (optional)	180° / hydraulic	N/A
Outrigger type	Hydraulic	Hydraulic
✓ Leveling system	Auto Leveling	Manual Leveling
✓ Leveling capability	13 1/2°	NP
Outrigger footprint - length	12 ft 4 in	NP
✓ Outrigger footprint - width	11 ft 4 in	13 ft 2 1/2 in
✓ Footpad diameter	12 1/2 in	---
✓ Tow speed rating	65 mph	N/P
Tongue weight	170 lbs	N/P
Surge brakes	Standard	---
Parking brake	Standard	---
Tire size	ST 225/75 R15D	---
Standard control system	24V DC	---
Batteries	4 x 6V 245 amp-hr	---
Charger	40 amp	---
✓ Total weight	3,880 lbs	4,400 lbs

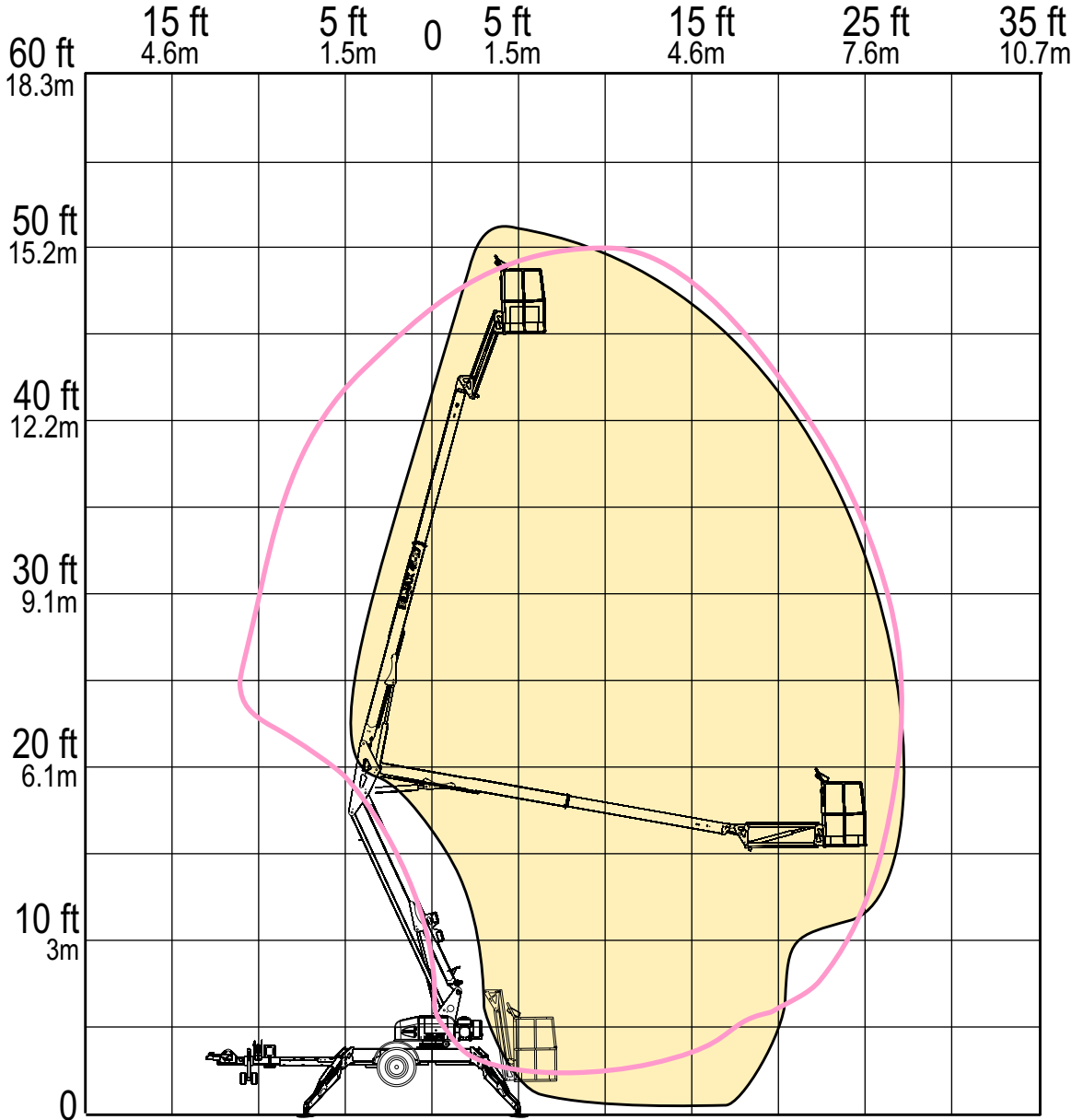
The BIL-JAX specifications listed above are based on physical measurements of prototype machines and are subject to change prior to production start-up.

Note: The Hidro-Grubert BL-50 model is manufactured in Brazil and is marketed by working height versus the US standard of platform height. This can confuse some customers as this model is actually more comparable to the 4527A both in price and specifications.

RANGE OF MOTION

BIL-JAX 4527A
VS.
HIDRO-GRUBERT BL-50TT

OUTREACH (FROM CENTERLINE)



	BIL-JAX 4527A	HIDRO BL-50TT
Max. Working Height	51 ft	50 ft
Max. Outreach (from centerline)	27 ft	27 ft 6 in

REACH MORE

MORE REACH