



## Competitive Profile Worksheet

### BIL-JAX Advantages

- 3 1/2 ft greater platform & working height.
- At least 12 ft greater centerline and usable outreach.
- Telescopic boom geometry provides greater outreach in lower portion of working envelope.
- Continuous turntable rotation.
- Larger platform.
- Optimized outrigger geometry provides greater leveling capability.
- ReGEN hydraulic circuit provides faster outrigger deployment.
- Slightly narrower outrigger footprint width provides the ability to set-up the machine in space restricted work areas.
- Larger footpad diameter provides lower ground pressure.
- Higher tow speed rating.
- Larger 15-inch tires.
- Greater amp-hour rating on batteries.
- Greater charger amp output rating.
- Multiple function speeds available at ground control box.
- More intuitive control system. (refer to control system comparison tab).
- DC/Gas hybrid model available, as well as drive & set and material lift options.
- Material lift option is available.
- Non-marking outrigger footpads and custom aluminum rims are standard equipment.

### Genie Advantages

- Articulating up and over capability.
- Over 5 ft shorter stowed length for greater maneuverability and access into space restricted areas.
- Slightly shorter stowed width.
- Shorter outrigger footprint length.
- Published machine weight is 1,050 lbs lighter.

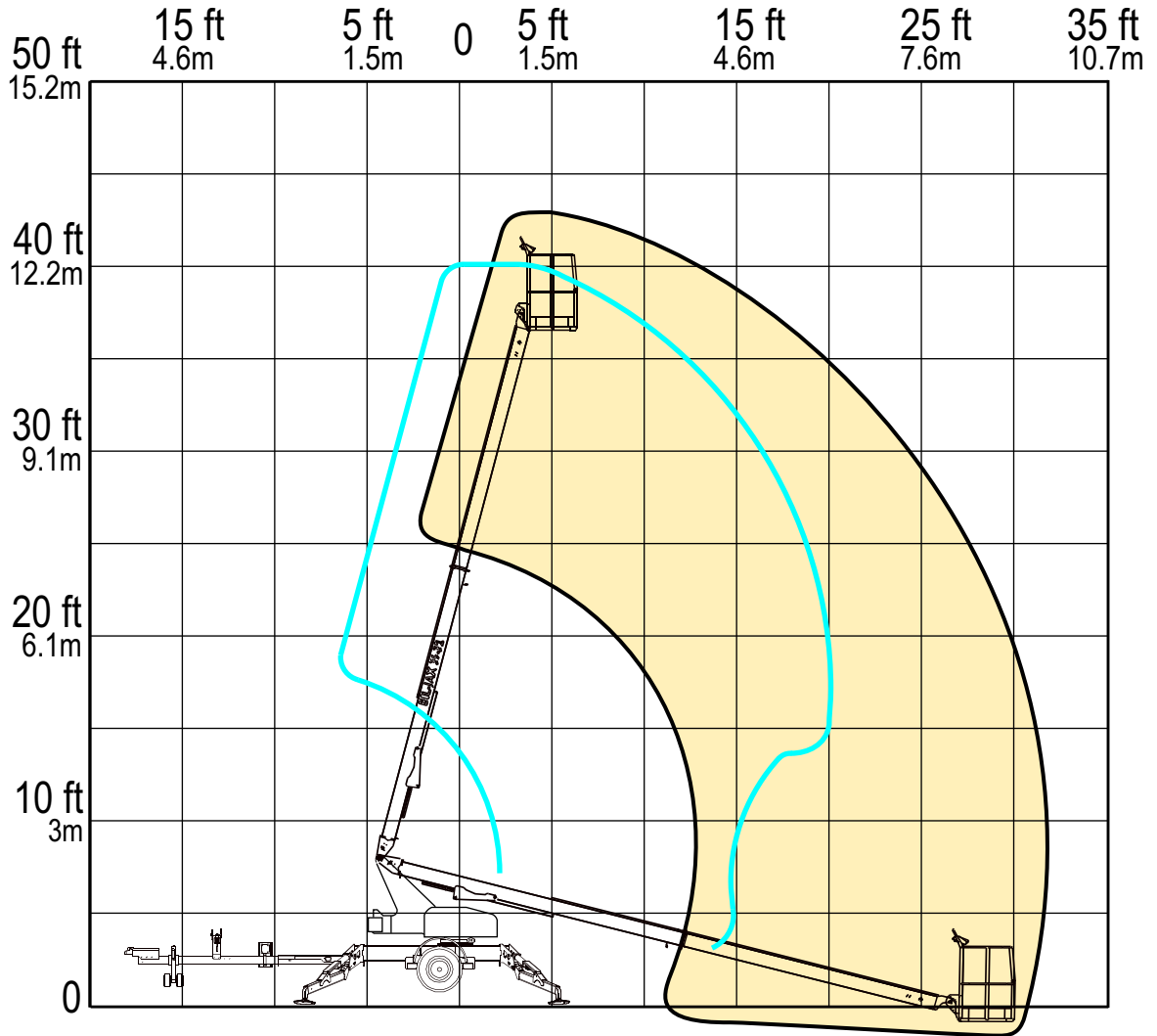
# BIL-JAX 3632T vs Genie TZ-34/20

Competitive Product Specifications		
	BIL-JAX	Genie (Terex)
Specifications	3632T	TZ-34/20
✓ Working height	43 ft 6 in	40 ft
✓ Maximum platform height	37 ft 6 in	34 ft
✓ Horizontal outreach		
✓ Maximum (from centerline)	32 ft	20 ft
✓ Maximum (from footpad edge)	27 ft	15 ft 1 in
Up and over height	N/A	16 ft 1 in
✓ Turntable rotation	360° continuous	359° non-continuous
Load capacity	500 lbs	500 lbs
Height - stowed	76 3/4 in	76 1/2 in
Length - stowed	21 ft 11 in	16 ft 8 in
Width - stowed	5 ft 5 in	4 ft 9 in
Platform		
Height	43 in	NP
✓ Length	30 in	27 in
✓ Width	48 in	44 in
Rotation / type (optional)	90° / manual	90° / manual
Jib		
Length	N/A	N/A
Vertical motion	N/A	N/A
Horizontal rotation (optional)	N/A	N/A
Outrigger type	Hydraulic	Hydraulic
Leveling system	Auto Leveling	Auto Leveling
✓ Leveling capability	12°	11°
Outrigger footprint - length	12 ft 2 in	10 ft 9 in
✓ Outrigger footprint - width	11 ft 3 1/2 in	11 ft 10 in
✓ Footpad diameter	12 1/2 in	8 in
✓ Tow speed rating	65 mph	60 mph
Tongue weight	190 lbs	315 lbs
Surge brakes	Standard	Standard
Parking brake	Standard	Standard
✓ Tire size	ST 225/75 R15D	ST 205/75 R14C
Standard control system	24V DC	24V DC
✓ Batteries	4 x 6V 245 amp-hr	4 x 6V 225 amp-hr
✓ Charger	40 amp	20 amp
Total weight	4,200 lbs	3,150 lbs

# RANGE OF MOTION

**BIL-JAX 3632T  
VS.  
GENIE TZ34**

## OUTREACH (FROM CENTERLINE)



	<b>BIL-JAX 3632T</b>	<b>GENIE TZ34</b>
<b>Max. Working Height</b>	43 ft 6 in	40 ft
<b>Max. Outreach</b> (from centerline)	32 ft	20 ft

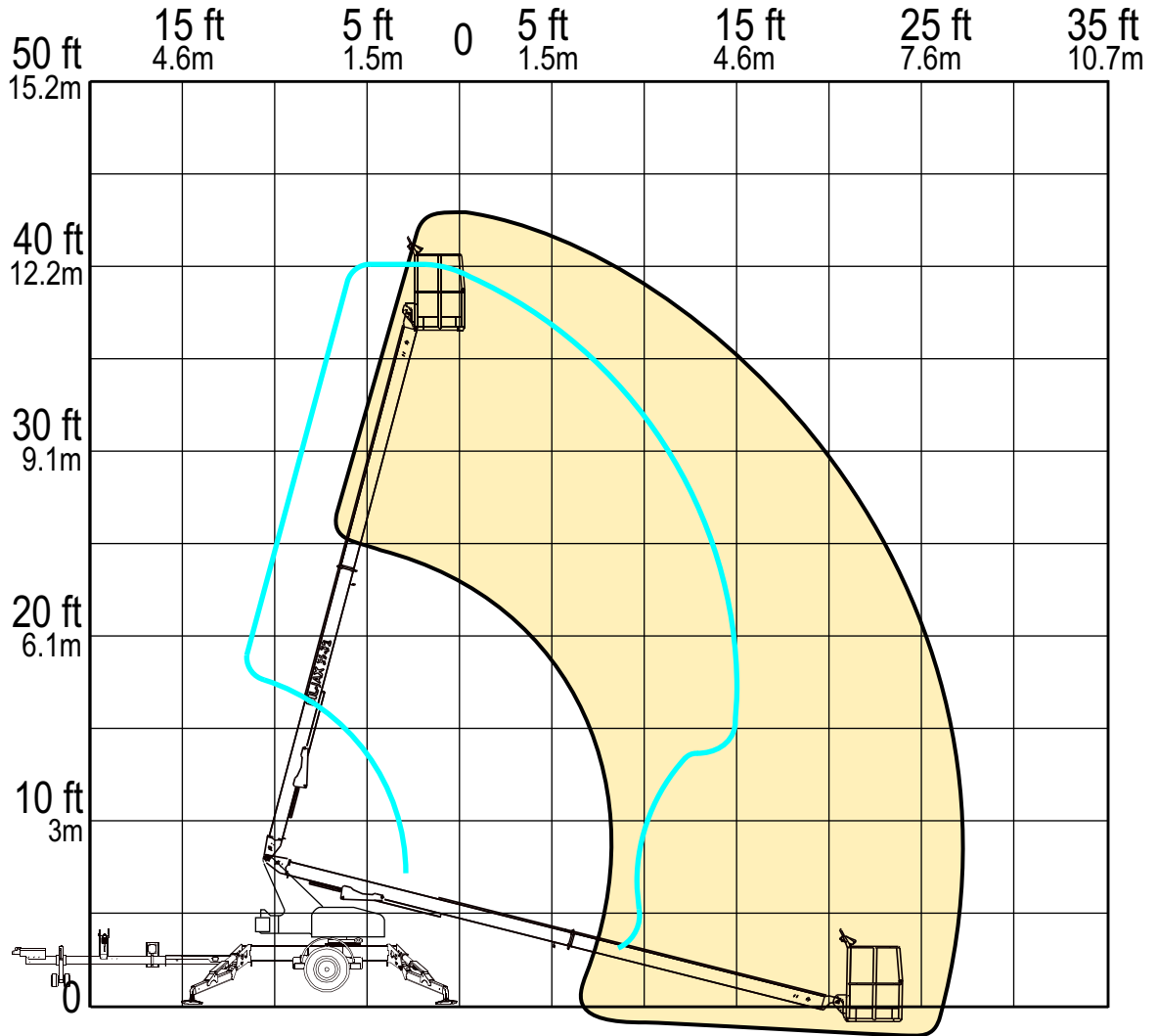
REACH MORE

MORE REACH

# RANGE OF MOTION

**BIL-JAX 3632T  
VS.  
GENIE TZ34**

## USABLE OUTREACH (FROM OUTRIGGER FOOTPAD)



	<b>BIL-JAX 3632T</b>	<b>GENIE TZ34</b>
<b>Max. Working Height</b>	43 ft 6 in	40 ft
<b>Max. Outreach</b> (from outrigger footpad)	27 ft	15 ft

REACH MORE

MORE REACH