



BIL-JAX 3632T vs Upright TL-33

Competitive Profile Worksheet

BIL-JAX Advantages

- 3 1/2 ft greater platform & working height.
- At least 16 ft greater centerline and usable outreach (from footpad edge).
- Telescopic boom geometry provides greater outreach in lower portion of working envelope.
- Continuous turntable rotation.
- Greater load capacity.
- Slightly shorter stowed height.
- Larger platform.
- Available platform rotation option.
- Hydraulic outriggers and optimized outrigger geometry provides greater leveling capability.
- ReGEN hydraulic circuit provides faster outrigger deployment.
- Automatic leveling system.
- Larger footpad diameter provides lower ground pressure.
- Significantly higher tow speed rating.
- Larger 15-inch tires.
- Greater amp-hour rating on batteries.
- More intuitive control system.
- DC/Gas hybrid model available, as well as drive & set and material lift options.
- Non-marking outrigger footpads and custom aluminum rims are standard equipment.
- Made in the USA.

Upright Advantages

- Articulating boom geometry provides up and over capability.
- Nearly 4 ft shorter stowed length for greater maneuverability and access into space restricted areas.
- Slightly shorter stowed width.
- Narrower outrigger footprint width provides the ability to set-up the machine in space restricted work areas.
- Published machine weight is 1,466 lbs lighter.

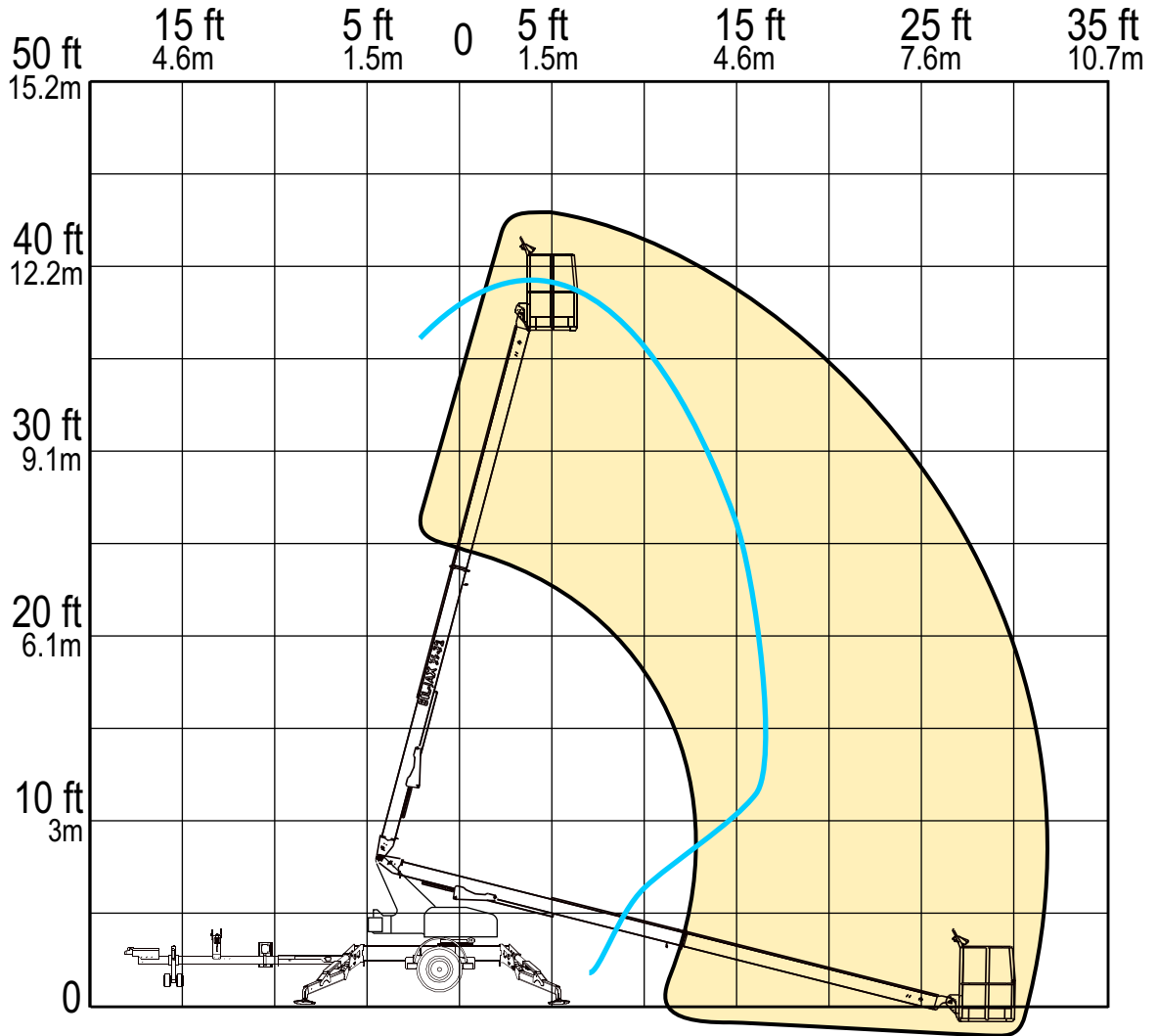
Competitive Product Specifications		
	BIL-JAX	Upright
Specifications	3632T	TL-33
✓ Working height	43 ft 6 in	40 ft
✓ Maximum platform height	37 ft 6 in	34 ft
✓ Horizontal outreach		
✓ Maximum (from centerline)	32 ft	16 ft
✓ Maximum (from footpad edge)	27 ft	NP
Up and over height	N/A	21 ft
✓ Turntable rotation	360° continuous	370° non-continuous
✓ Load capacity	500 lbs	475 lbs
✓ Height - stowed	76 3/4 in	78 in
Length - stowed	21 ft 11 in	18 ft
Width - stowed	5 ft 5 in	5 ft
Platform		
Height	43 in	NP
✓ Length	30 in	24 in
✓ Width	48 in	47 in
✓ Rotation / type (optional)	90° / manual	---
Jib		
Length	N/A	N/A
Vertical motion	N/A	N/A
Horizontal rotation (optional)	N/A	N/A
✓ Outrigger type	Hydraulic	Manual
✓ Leveling system	Auto Leveling	Manual Leveling
✓ Leveling capability	12°	NP
Outrigger footprint - length	12 ft 2 in	NP
Outrigger footprint - width	11 ft 3 1/2 in	9 ft 10 in
✓ Footpad diameter	12 1/2 in	---
✓ Tow speed rating	65 mph	45 mph
Tongue weight	190 lbs	NP
Surge brakes	Standard	---
Parking brake	Standard	---
✓ Tire size	ST 225/75 R15D	ST 185R 13C
Standard control system	24V DC	24V DC
✓ Batteries	4 x 6V 245 amp-hr	4 x 6V 220 amp-hr
Charger	40 amp	---
Total weight	4,200 lbs	2,734 lbs

It appears that Upright has withdrawn this model from US distribution. It has been included in this manual in for reference only.

RANGE OF MOTION

**BIL-JAX 3632T
VS.
UPRIGHT TL-33**

OUTREACH (FROM CENTERLINE)



	BIL-JAX 3632T	UPRIGHT TL-33
Max. Working Height	43 ft 6 in	39 ft 10 in
Max. Outreach (from centerline)	32 ft	16 ft 5 in

REACH MORE

MORE REACH