



BIL-JAX 3632T vs JLG T350

Competitive Profile Worksheet

BIL-JAX Advantages

- 2 1/2 ft greater platform & working height.
- Nearly 12 ft greater centerline outreach.
- Nearly 14 ft greater usable outreach (from footpad edge).
- Telescopic boom geometry provides greater outreach in lower portion of working envelope.
- Continuous turntable rotation.
- Slightly shorter stowed height.
- Optimized outrigger geometry provides greater leveling capability.
- ReGEN hydraulic circuit provides faster outrigger deployment.
- Individual outrigger controls provide for more versatility, allowing hyper-extension of outriggers for extra platform height and also maximizing leveling capability.
- Larger amp-hour rating on batteries.
- Sealed push button mechanical switches versus plastic toggle switches.
- Multiple function speeds at ground control box.
- More intuitive control system (refer to control system comparison tab).
- Robust steel outrigger guards versus thin plastic tubing.
- Continuous rotation ensures platform stowage at zero degree starting point.
- DC/Gas hybrid model available.
- Non-marking outrigger footpads and custom aluminum rims are standard equipment.

Competitive Product Specifications		
	BIL-JAX	JLG
Specifications	3632T	T350
✓ Working height	43 ft 6 in	41 ft
✓ Maximum platform height	37 ft 6 in	35 ft
✓ Horizontal outreach		
✓ Maximum (from centerline)	32 ft	20 ft 2 in
✓ Maximum (from footpad edge)	27 ft	13 ft 6 in
Up and over height	N/A	15 ft
✓ Turntable rotation	360° continuous	410° non-continuous
Load capacity	500 lbs	500 lbs
✓ Height - stowed	76 3/4 in	78 in
Length - stowed	21 ft 11 in	21 ft
Width - stowed	5 ft 5 in	4 ft 11 in
Platform		
Height	43 in	NP
Length	30 in	30 in
Width	48 in	48 in
Rotation / type (optional)	90° / manual	90° / manual
Jib		
Length	N/A	N/A
Vertical motion	N/A	N/A
Horizontal rotation (optional)	N/A	N/A
Outrigger type	Hydraulic	Hydraulic
Leveling system	Auto Leveling	Auto Leveling
✓ Leveling capability	12°	11°
Outrigger footprint - length	12 ft 2 in	11 ft 8 in
Outrigger footprint - width	11 ft 3 1/2 in	10 ft 5 in
✓ Footpad diameter	12 1/2 in	10 1/2 in
Tow speed rating	65 mph	65 mph
Tongue weight	190 lbs	242 lbs
Surge brakes	Standard	Standard
Parking brake	Standard	Standard
✓ Tire size	ST 225/75 R15D	ST 205/75 R14C
Standard control system	24V DC	24V DC
✓ Batteries	4 x 6V 245 amp-hr	4 x 6V 220 amp-hr
Charger	40 amp	---
Total weight	4,200 lbs	3,400 lbs



BIL-JAX 3632T vs JLG T350

Competitive Profile Worksheet

BIL-JAX Advantages

Refer to prior page for more BIL-JAX advantages.

- Material lift option is overload protected by a load weighing system versus a pressure relief valve providing a more effective deterrent against overloading and also provides load weight information on the display panel.

JLG Advantages

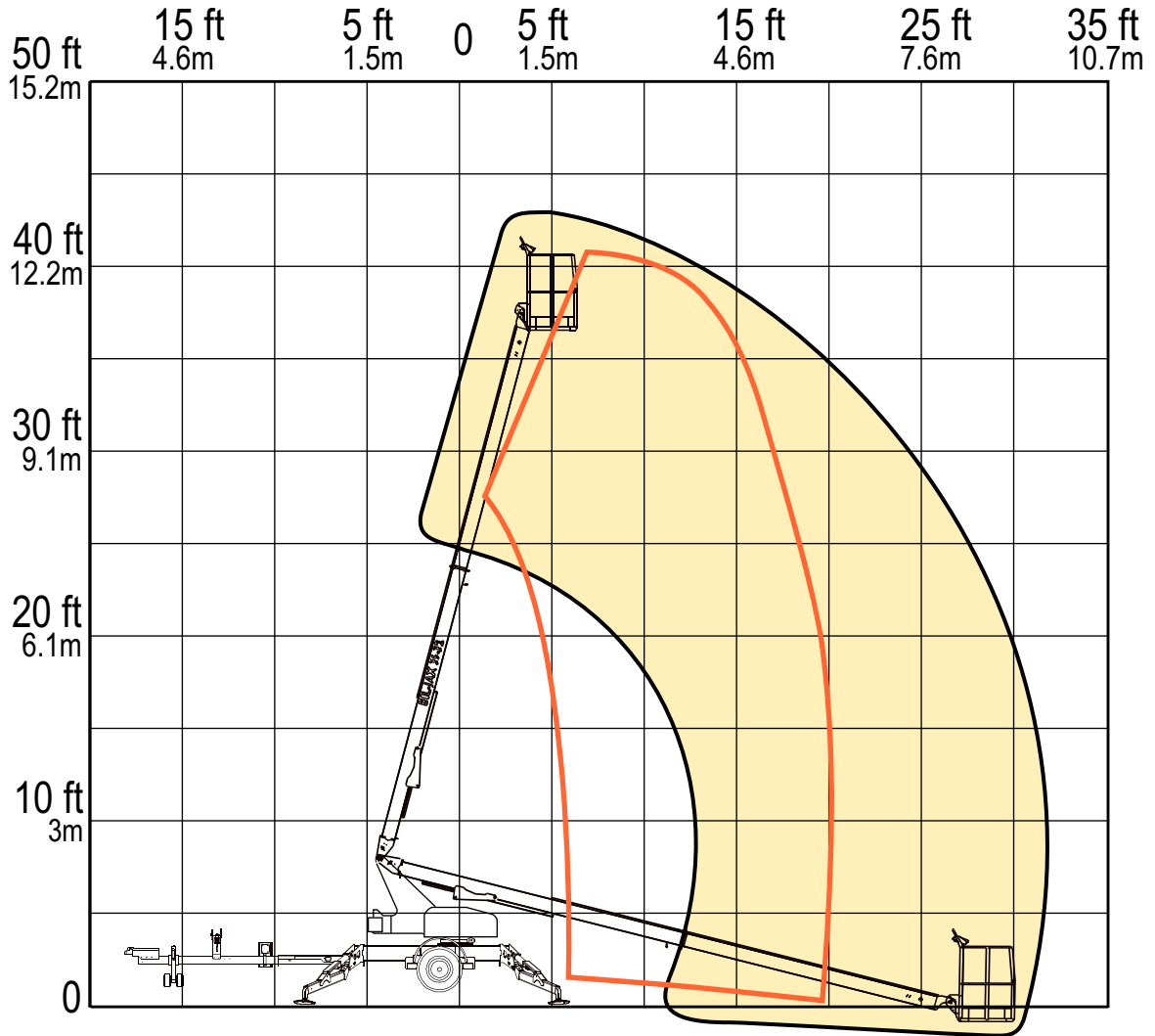
- Articulating boom geometry provides up and over capability.
- Slightly shorter stowed width and length.
- Slightly smaller overall outrigger footprint.
- Machine weight is 800 lbs lighter.
- Proportional joystick controls in platform.
- Platform control box has molded handles for ease of handling when in material lift mode.
- Stand-alone gas model is available.
- Combination hitch is standard equipment.
- Air and water lines to the platform are standard equipment.

Competitive Product Specifications		
	BIL-JAX	JLG
Specifications	3632T	T350
✓ Working height	43 ft 6 in	41 ft
✓ Maximum platform height	37 ft 6 in	35 ft
✓ Horizontal outreach		
✓ Maximum (from centerline)	32 ft	20 ft 2 in
✓ Maximum (from footpad edge)	27 ft	13 ft 6 in
Up and over height	N/A	15 ft
✓ Turntable rotation	360° continuous	410° non-continuous
Load capacity	500 lbs	500 lbs
✓ Height - stowed	76 3/4 in	78 in
Length - stowed	21 ft 11 in	21 ft
Width - stowed	5 ft 5 in	4 ft 11 in
Platform		
Height	43 in	NP
Length	30 in	30 in
Width	48 in	48 in
Rotation / type (optional)	90° / manual	90° / manual
Jib		
Length	N/A	N/A
Vertical motion	N/A	N/A
Horizontal rotation (optional)	N/A	N/A
Outrigger type	Hydraulic	Hydraulic
Leveling system	Auto Leveling	Auto Leveling
✓ Leveling capability	12°	11°
Outrigger footprint - length	12 ft 2 in	11 ft 8 in
Outrigger footprint - width	11 ft 3 1/2 in	10 ft 5 in
✓ Footpad diameter	12 1/2 in	10 1/2 in
Tow speed rating	65 mph	65 mph
Tongue weight	190 lbs	242 lbs
Surge brakes	Standard	Standard
Parking brake	Standard	Standard
✓ Tire size	ST 225/75 R15D	ST 205/75 R14C
Standard control system	24V DC	24V DC
✓ Batteries	4 x 6V 245 amp-hr	4 x 6V 220 amp-hr
Charger	40 amp	---
Total weight	4,200 lbs	3,400 lbs

RANGE OF MOTION

**BIL-JAX 3632T
VS.
JLG T350**

OUTREACH (FROM CENTERLINE)



	BIL-JAX 3632T	JLG T350
Max. Working Height	43 ft 6 in	41 ft
Max. Outreach (from centerline)	32 ft	20 ft 2 in

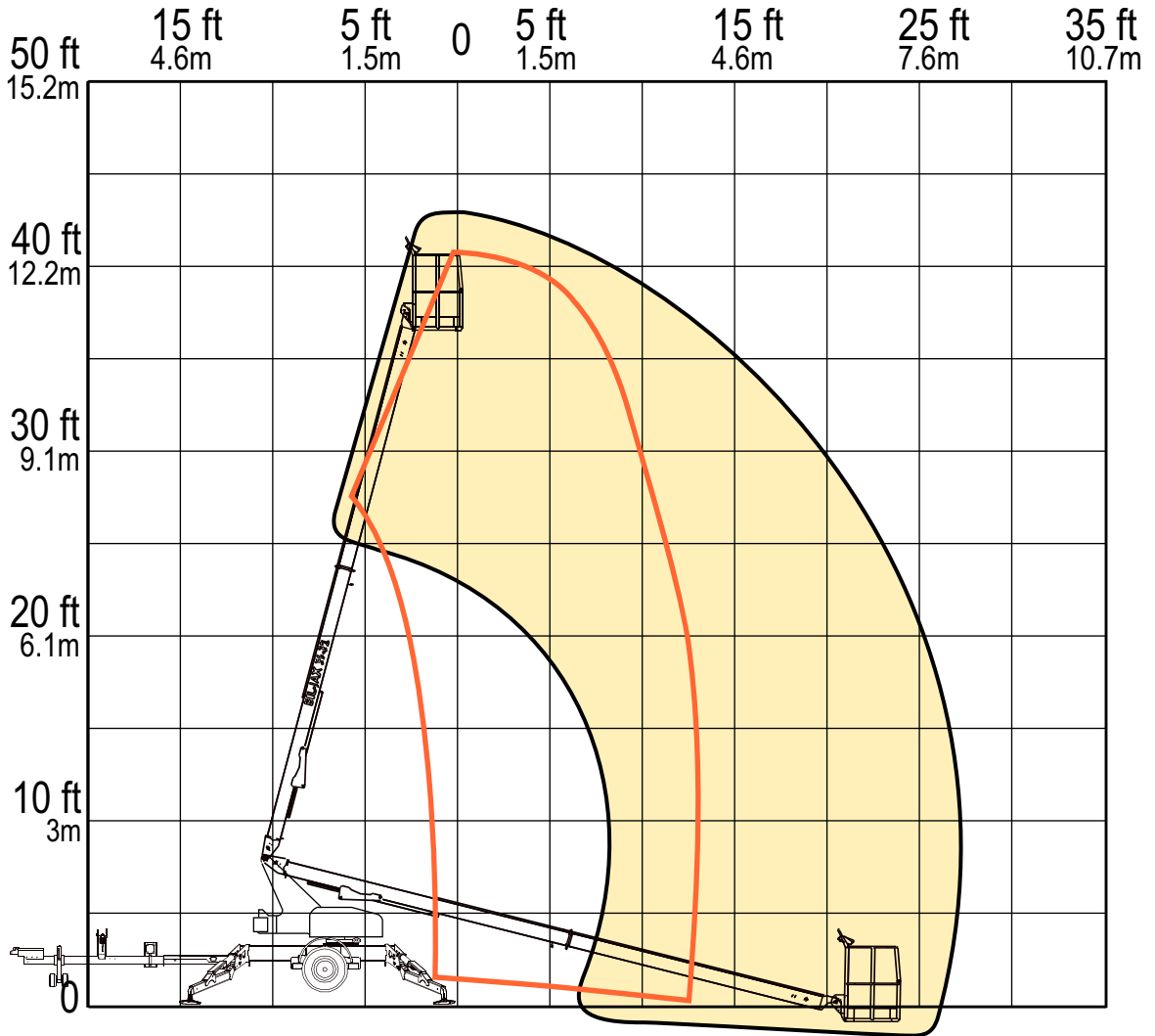
REACH MORE

MORE REACH

RANGE OF MOTION

**BIL-JAX 3632T
VS.
JLG T350**

USABLE OUTREACH (FROM OUTRIGGER FOOTPAD)



	BIL-JAX 3632T	JLG T350
Max. Working Height	43 ft 6 in	41 ft
Max. Outreach (from outrigger footpad)	27 ft	13 ft 6 in

REACH MORE

MORE REACH