



# BIL-JAX 3632T vs NiftyLift T34T

## Competitive Profile Worksheet

### BIL-JAX Advantages

- 4 ft greater platform & working height.
- At least 12 ft greater centerline and usable outreach (from footpad edge).
- Telescopic boom geometry provides greater outreach in lower portion of working envelope.
- Continuous turntable rotation.
- Larger platform.
- Automatic leveling system.
- Optimized outrigger geometry provides greater leveling capability.
- ReGEN hydraulic circuit provides faster outrigger deployment.
- Slightly narrower outrigger footprint provides the ability to set-up the machine in space restricted work areas.
- Larger footpad diameter provides lower ground pressure.
- Significantly higher tow speed rating.
- More intuitive control system.
- Significantly less hoses and fittings reduces potential leak points.
- Material lift option is available.
- Non-marking outrigger footpads and custom aluminum rims are standard equipment.
- Made in USA.

### NiftyLift Advantages

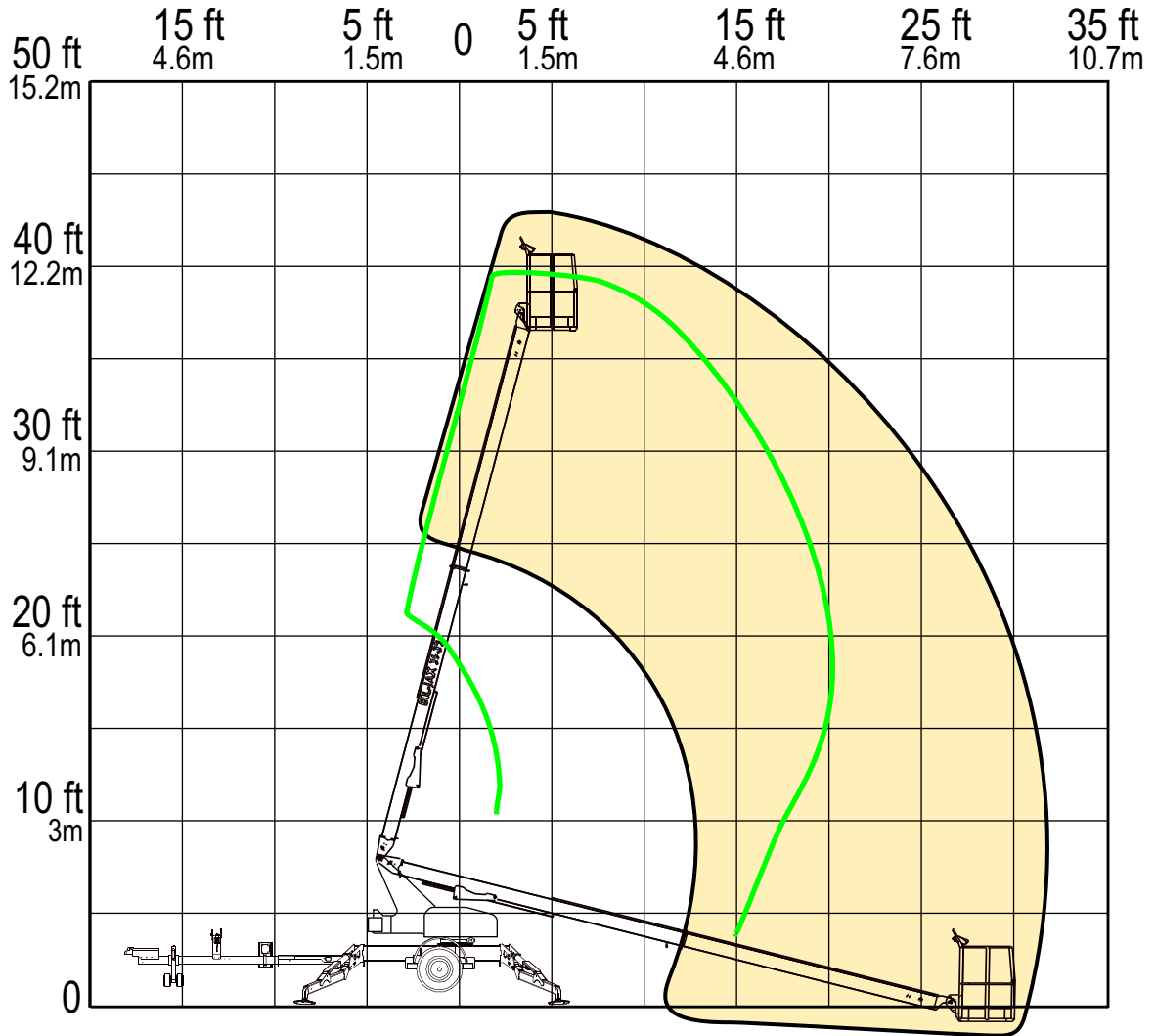
- Articulating boom geometry provides up and over capability.
- More compact stowed package (stowed height length & width).
- Published machine weight is 1,120 lbs lighter.
- Stand alone gas options is available.

Competitive Product Specifications		
	BIL-JAX	NiftyLift
Specifications	3632T	TM34T
✓ Working height	43 ft 6 in	39 ft 6 in
✓ Maximum platform height	37 ft 6 in	33 ft 6 in
✓ Horizontal outreach		
✓ Maximum (from centerline)	32 ft	20 ft 1 in
✓ Maximum (from footpad edge)	27 ft	NP
Up and over height	N/A	NP
✓ Turntable rotation	360° continuous	360° non-continuous
Load capacity	500 lbs	500 lbs
Height - stowed	76 3/4 in	75 in
Length - stowed	21 ft 11 in	14 ft 9 in
Width - stowed	5 ft 5 in	4 ft 11 in
Platform		
Height	43 in	NP
✓ Length	30 in	25 in
✓ Width	48 in	44 in
Rotation / type (optional)	90° / manual	---
Jib		
Length	N/A	N/A
Vertical motion	N/A	N/A
Horizontal rotation (optional)	N/A	N/A
Outrigger type	Hydraulic	Hydraulic
✓ Leveling system	Auto Leveling	Manual Leveling
✓ Leveling capability	12°	NP
Outrigger footprint - length	12 ft 2 in	NP
✓ Outrigger footprint - width	11 ft 3 1/2 in	11 ft 8 in
✓ Footpad diameter	12 1/2 in	NP
✓ Tow speed rating	65 mph	45 mph
Tongue weight	190 lbs	NP
Surge brakes	Standard	---
Parking brake	Standard	---
Tire size	ST 225/75 R15D	NP
Standard control system	24V DC	---
Batteries	4 x 6V 245 amp-hr	---
Charger	40 amp	---
Total weight	4,200 lbs	3,080 lbs

# RANGE OF MOTION

**BIL-JAX 3632T  
VS.  
NIFTY LIFT TM34T**

## OUTREACH (FROM CENTERLINE)



	<b>BIL-JAX 3632T</b>	<b>NIFTY TM34T</b>
<b>Max. Working Height</b>	43 ft 6 in	39 ft 6 in
<b>Max. Outreach</b> (from centerline)	32 ft	20 ft 1 in

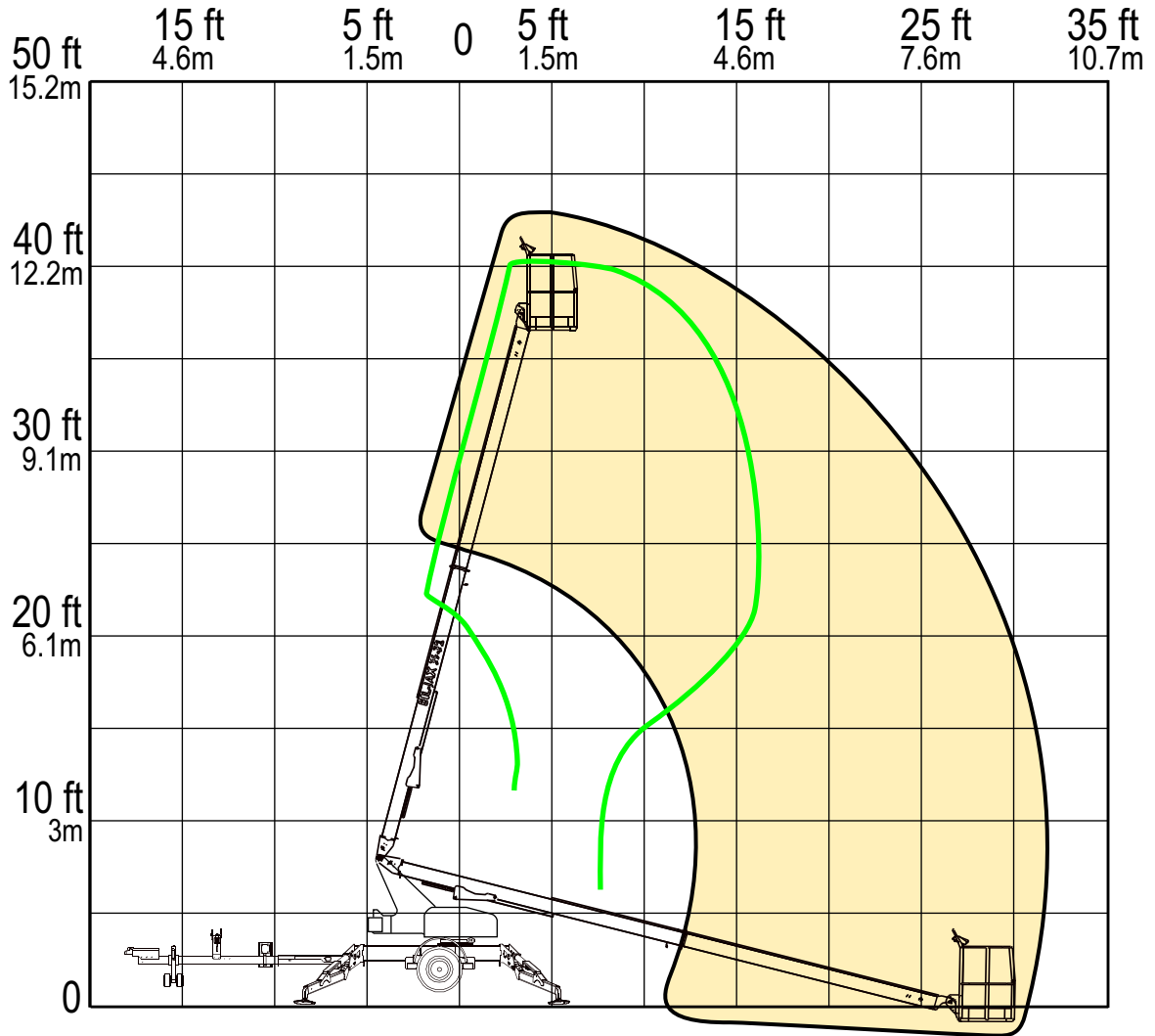
REACH MORE

MORE REACH

# RANGE OF MOTION

**BIL-JAX 3632T  
VS.  
NIFTY LIFT TM 34**

## OUTREACH (FROM CENTERLINE)



	<b>BIL-JAX 3632T</b>	<b>NIFTY TM34</b>
<b>Max. Working Height</b>	43 ft 6 in	40 ft 5 in
<b>Max. Outreach</b> (from centerline)	32 ft	16 ft 8 in

REACH MORE

MORE REACH